













Adapter – BSP – Metrisch – NPT – Kegelig
Adaptors – BSP – Metric – NPT – Taper





ADAPTER - BSP - METRISCH - NPT - KEGELIG



ADAPTORS - BSP - METRIC - NPT - TAPER

Produktgruppen	Product Groups	Seite Page
 <p>Gerade Adapter - BSP - Metrisch - 60°-Konus</p>	<p>Straight Adaptors - BSP - Metric - 60°-Cone</p>	5.4
 <p>Gerade Anschweißstutzen - Metrisch - 60°-Konus</p>	<p>Straight Welding Adaptors - Metric - 60°-Cone</p>	5.5
 <p>Gerade Adapter - BSP - Zylindrisch - BSP - Kegelig - BSP - Zylindrisch - 60°-Konus - BSP - Zylindrisch - 60°-Konus mit Weichdichtung - BSP - Zylindrisch - Flachdichtend - BSP - Zylindrisch - Reduziert - 60°-Konus - BSP - Zylindrisch - Reduziert - 60°-Konus mit Weichdichtung - BSP - Zylindrisch - NPT - NPT - NPT - NPT - NPT - Reduziert - BSP - Kegelig - BSP - Kegelig - BSP - Kegelig - BSP - Kegelig - Reduziert</p>	<p>Straight Adaptors - BSP - Parallel - BSP - Taper - BSP - Parallel - 60°-Cone - BSP - Parallel - 60°-Cone with Soft Sealing - BSP - Parallel - Flat Face - BSP - Parallel - Reduced - 60°-Cone - BSP - Parallel - Reduced - 60°-Cone with Soft Sealing - BSP - Parallel - NPT - NPT - NPT - NPT - NPT - Reduced - BSP - Taper - BSP - Taper - BSP - Taper - BSP - Taper - Reduced</p>	5.6 5.7 5.8 5.9 5.10 5.11 5.12 5.13 5.14 5.15 5.16
 <p>Verschlussstopfen - BSP - Kegelig - NPT - Männlich</p>	<p>Plug - BSP - Taper - NPT - Male</p>	5.17 5.18
 <p>Gerade Adapter - BSP - Weiblich - BSP - Kegelig - BSP - Weiblich - NPT - Männlich - BSP - Weiblich - BSP - Zylindrisch</p>	<p>Straight Adaptors - BSP - Female - BSP - Taper - BSP - Female - NPT - Male - BSP - Female - BSP - Parallel</p>	5.19 5.20 5.21
 <p>Adapter - DKR - Gerade Adapter - BSP - Weiblich - Winkel-Adapter - BSP - Weiblich - T-Adapter - BSP - Weiblich - K-Adapter - BSP - Weiblich</p>	<p>Adaptors - DKR - Straight Adaptors - BSP - Female - Elbow-Adaptors - BSP - Female - T-Adaptors - BSP - Female - K-Adaptors - BSP - Female</p>	5.22 5.23 5.24 5.25
 <p>Adapter - Winkel-Adapter - BSP - Zylindrisch - Männlich - Winkel-Adapter - NPT - NPT - Männlich - 90° - T-Adapter - BSP - Zylindrisch - Männlich - K-Adapter - BSP - Zylindrisch - Männlich</p>	<p>Adaptors - Elbow-Adaptors - BSP - Male - Elbow-Adaptors - NPT - NPT - Male - 90° - T-Adaptors - BSP - Male - K-Adaptors - BSP - Male</p>	5.26 5.27 5.28 5.29
 <p>WE-Kompakt-Winkeladapter - 90° - BSP - Weiblich - BSP - Zylindrisch - Männlich - 45° - BSP - Weiblich - BSP - Zylindrisch - Männlich</p>	<p>WE-Block-Elbow-Adaptors - 90° - BSP - Female - BSP - Male - 45° - BSP - Female - BSP - Male</p>	5.30 5.31
 <p>Adapter - LE-Adapter - BSP - Weiblich - BSP - Zylindrisch - Männlich - TE-Adapter - BSP - Weiblich - BSP - Zylindrisch - Männlich</p>	<p>Adaptors - LE-Adaptors - BSP - Female - BSP - Male - TE-Adaptors - BSP - Female - BSP - Male</p>	5.32 5.33
 <p>Adapter - Winkel-Adapter - BSP - Zylindrisch - T-Adapter - BSP - Zylindrisch - Winkel-Adapter - NPT - T-Adapter - NPT</p>	<p>Adaptors - Elbow-Adaptors - BSP - Parallel - T-Adaptors - BSP - Parallel - Elbow-Adaptors - NPT - T-Adaptors - NPT</p>	5.34 5.35 5.36 5.37



Produktgruppen	Product Groups	Seite Page
 Winkel-Adapter - 90° - NPT - Männlich - NPT - Weiblich	<i>Elbow-Adaptors - 90° - NPT - Male - NPT - Female</i>	5.38
 Gerade Schott-Adapter - BSP - Zylindrisch - Männlich	<i>Straight Bulkhead Adaptors - BSP - Male</i>	5.39
 Winkel-Adapter - BSP - Zylindrisch - Männlich - BSP - Kegelig - Männlich	<i>Elbow-Adaptors - BSP - Male - BSP - Taper - Male</i>	5.40
 Sechskant-Muffen - BSP - Zylindrisch - BSP - Zylindrisch - Reduziert - NPT - NPT - Reduziert	<i>Hexagon Sockets - BSP - Female</i>	5.41
	<i>- BSP - Female - Reduced</i>	5.42
	<i>- NPT - Female</i>	5.43
	<i>-NPT - Reduced</i>	5.44
 Verschlusskappen - DKR - BSP - Weiblich	<i>Swivel Caps - DKR - BSP - Female</i>	5.45
 Verschlussstopfen - BSP - Zylindrisch mit Außen-Sechskant	<i>BSP-60°-Coned Plug - Parallel with Outside Hexagon</i>	5.46
 Sechskant-Adapter - BSP - Außen / Innen - Form A - BSP - Außen / Innen - Form B	<i>Hexagon Adaptors - BSP - Male / Female - Form A</i>	5.47
	<i>- BSP - Male / Female - Form B</i>	5.48
 Gewinde-Reduzierungen - BSP - Außen - NPT - Innen - Form A - BSP - Außen - NPT - Innen - Form B - NPT - Außen - BSP - Innen - Form A - NPT - Außen - BSP - Innen - Form B - NPT - Außen - NPT - Innen - Form A - NPT - Außen - NPT - Innen - Form B	<i>Male/Female Stud Adaptors - BSP - Male - NPT - Female - Form A</i>	5.49
	<i>- BSP - Male - NPT - Female - Form B</i>	5.50
	<i>- NPT - Male - BSP - Female - Form A</i>	5.51
	<i>- NPT - Male - BSP - Female - Form B</i>	5.52
	<i>- NPT - Male - NPT - Female - Form A</i>	5.53
	<i>- NPT - Male - NPT - Female - Form B</i>	5.54
 Sechskant-Kappen - BSP - Zylindrisch - Innen - NPT - Innen	<i>Hexagon Caps - BSP - Parallel - Female</i>	5.55
	<i>- NPT - Female</i>	5.56
 EVW-Verschraubungen - 90° - BSP - Männlich	<i>Male Stud Elbows - 90° - BSP - Male</i>	5.57

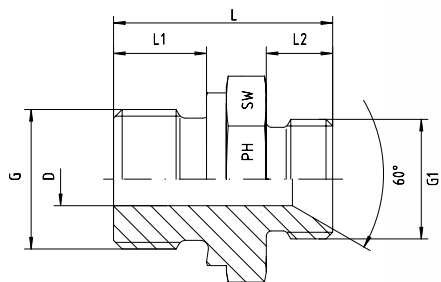


Produktgruppen	Product Groups	Seite Page
 Gegenmutter für Schottverschraubungen - Zylindrisch	<i>Locknuts for Bulkhead Couplings</i> - <i>BSP - Parallel</i>	5.58
 Gerade Schott-Adapter - BSP - Metrisch	<i>Straight Bulkhead Adaptors</i> - <i>BSP - Metric</i>	5.59

GERADE ADAPTER STRAIGHT ADAPTORS



EDELSTAHL / STAINLESS STEEL
VERBINDUNGSTECHNIK
FLUID CONNECTORS



BSP mit angedrehter Dichtkante Form B
Metrisch mit 60°-Innenkonus

BSP with Sealing Shoulder Form B
Metric with 60°-Cone

Druck Pressure PN	Gewinde Thread		Ca. Maße Approx. Dimensions					Bestellzeichen Order-Code	Brutto-Preis Gross-Price Euro (€)
	G = BSP	G1	L	L1	L2	D	SW		
250	1/2"	M 18 x 1,5	34	14	11	10	27	0226820-08-06	13,50
250	1/2"	M 22 x 1,5	35	14	12	11	27	0226820-08	13,50
250	1/2"	M 26 x 1,5	38	14	12	14	27	0226820-08-10	13,50
160	1/2"	M 30 x 1,5	36	14	12	12	32	0226820-08-12	17,95
160	3/4"	M 26 x 1,5	38	16	12	15	32	0226820-12-10	17,20
160	3/4"	M 30 x 1,5	39	16	14	20	32	0226820-12	15,30
160	1"	M 30 x 1,5	41	18	14	20	41	0226821-16-12	28,30
160	1"	M 38 x 1,5	41	18	14	24	41	0226825-16	25,30
100	1 1/4"	M 38 x 1,5	44	20	14	25	50	0226826-20-16	40,50
100	1 1/4"	M 45 x 1,5	46	20	16	32	50	0226832-20	35,50
100	1 1/2"	M 45 x 1,5	49	22	16	32	55	0226833-24-20	55,50
100	1 1/2"	M 52 x 1,5	49	22	16	39	55	0226840-24	45,50
50	2"	M 65 x 2	54	24	17	45	70	0226850-32	69,70
50	2 1/2"	M 78 x 2	57	26	17	56	85	0226860-40	204,55
50	3"	M 100 x 2	68	28	22	76	105	0226880-48	450,00

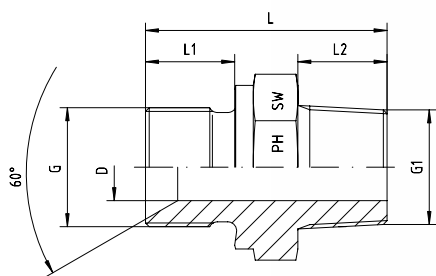


Metrisch - Fein mit 60°-Innenkonus

Metric - Pitch 1,5 mm and 2 mm with 60°-Cone

Druck Pressure PN	Gewinde Thread G	Ca. Maße Approx. Dimensions					Bestellzeichen Order-Code	Brutto-Preis Gross-Price Euro (€)
		L	L1	D	D1	SW		
250	M 12 x 1,5	24	10	3,5	6	12	0806504-02	11,60
250	M 14 x 1,5	25	10	4,5	8	14	0806507-04	11,80
250	M 16 x 1,5	25	10	6,0	10	17	0806509-05	12,00
250	M 18 x 1,5	25	10	8,0	14	19	0806511-06	12,00
250	M 22 x 1,5	27	12	10,5	17	22	0806514-08	13,00
250	M 26 x 1,5	28	12	13,0	21	27	0806517-10	14,00
160	M 30 x 1,5	28	12	15,5	25	30	0806521-12	15,00
160	M 38 x 1,5	30	14	21,0	30	41	0806526-16	24,00
100	M 45 x 1,5	31	14	28,0	38	46	0806533-20	30,00
100	M 52 x 1,5	32	14	35,0	44	55	0806541-24	36,50
50	M 65 x 2	36	17	45,0	57	65	0806551-32	56,00
50	M 78 x 2	36	17	55,0	64	80	0806561-40	118,50
50	M 90 x 2	47	22	67,0	76	90	0806571-48	140,50
50	M 100 x 2	47	22	77,0	89	100	0806581-56	179,20

GERADE ADAPTER STRAIGHT ADAPTORS

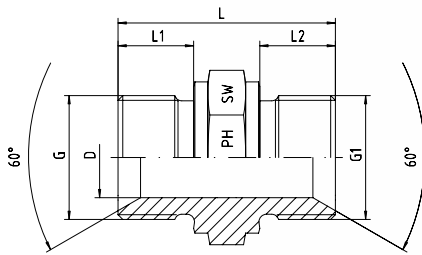


BSP - Zylindrisch - Männlich mit 60°-Konus
BSP - Kegelig - Männlich
Andere Größen auf Anfrage!

*BSP - Male with 60°-Cone
BSP - Taper - Male
Other sizes on request!*

Druck Pressure PN	Gewinde Thread		Ca. Maße Approx. Dimensions					Bestellzeichen Order-Code	Brutto-Preis Gross-Price Euro (€)
	G = BSP	G1 = BSPT	L	L1	L2	D	SW		
400	1/8"-28	1/8"-28	23,0	8	8	4,0	14	1050710-02-02	6,00
400	1/4"-19	1/4"-19	30,0	10	12	6,0	19	1050710-04-04	5,37
400	3/8"-19	3/8"-19	32,5	12	12	9,0	22	1050710-06-06	6,75
400	1/2"-14	1/2"-14	37,0	14	14	12,5	27	1050710-08-08	9,18
400	3/4"-14	3/4"-14	47,0	16	19	17,5	32	1050710-12-12	12,45
400	1"-11	1"-11	49,0	18	18	22,0	41	1050710-16-16	19,40
200	1 1/4"-11	1 1/4"-11	54,5	20	20	29,0	50	1050710-20-20	36,00
200	1 1/2"-11	1 1/2"-11	58,5	22	22	37,0	55	1050710-24-24	51,85
100	2"-11	2"-11	66,0	25	26	45,0	70	1050710-32-32	99,00

Druck Pressure PN	Gewinde Thread		Ca. Maße Approx. Dimensions					Bestellzeichen Order-Code	Brutto-Preis Gross-Price Euro (€)
	G = BSP	G1 = BSPT	L	L1	L2	D	SW		
400	1/4"-19	1/8"-28	26,0	10	8	4,0	19	1050710-04-02	6,95
400	1/4"-19	3/8"-19	32,0	10	12	7,0	19	1050710-04-06	8,45
400	1/4"-19	1/2"-14	34,0	10	14	6,0	22	1050710-04-08	10,35
400	3/8"-19	1/4"-19	33,0	12	12	7,0	22	1050710-06-04	8,45
400	3/8"-19	1/2"-14	42,0	12	19	9,0	22	1050710-06-08	10,30
400	1/2"-14	3/8"-19	37,0	14	12	9,0	27	1050710-08-06	10,30
400	1/2"-14	3/4"-14	45,0	14	19	12,5	27	1050710-08-12	15,65
400	3/4"-14	1/2"-14	40,0	16	14	12,5	32	1050710-12-08	15,95
400	3/4"-14	1"-11	45,0	16	18	17,5	36	1050710-12-16	19,50



BSP - BSP
 Mit 60°-Innenkonus und angedrehter Dichtkante Form B
 Männlich - Männlich

BSP - BSP
 With 60°-Cone and Sealing Shoulder Form B
 Male - Male - Parallel

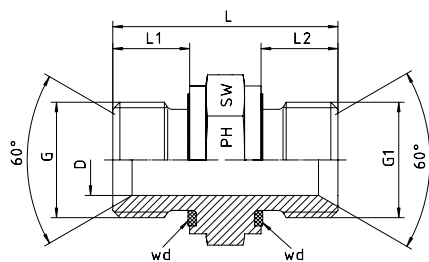
Druck Pressure PN	Gewinde Thread		Ca. Maße Approx. Dimensions					Bestellzeichen Order-Code	Brutto-Preis Gross-Price Euro (€)
	G = BSP	G1 = BSP	L	L1	L2	D	SW		
400	1/8"-28	1/8"-28	23,0	8	8	4,5	14	1050510-02-02	5,00
400	1/4"-19	1/4"-19	29,0	10	10	6,0	19	1050510-04-04	5,10
400	3/8"-19	3/8"-19	35,0	12	12	9,0	22	1050510-06-06	5,65
400	1/2"-14	1/2"-14	41,0	14	14	13,0	27	1050510-08-08	7,80
400	5/8"-14	5/8"-14	43,5	16	16	14,5	30	1050510-10-10	12,50
400	3/4"-14	3/4"-14	46,0	16	16	18,0	32	1050510-12-12	12,30
400	1"-11	1"-11	52,0	18	18	23,5	41	1050510-16-16	19,30
200	1 1/4"-11	1 1/4"-11	58,0	20	20	30,0	50	1050510-20-20	27,50
200	1 1/2"-11	1 1/2"-11	61,0	22	22	37,0	55	1050510-24-24	35,80
100	2"-11	2"-11	67,0	25	25	45,0	70	1050510-32-32	74,80
70	2 1/2"-11	2 1/2"-11	70,0	26	26	51,0	90	1050510-40-40	172,50

GERADE ADAPTER MIT WEICHDICHTUNG

STRAIGHT ADAPTORS WITH SOFT SEALING



EDELSTAHL / STAINLESS STEEL
VERBINDUNGSTECHNIK
FLUID CONNECTORS



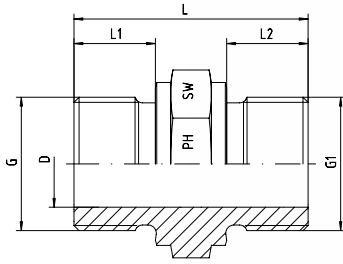
BSP - BSP

Mit 60°-Innenkonus
wd = Abdichtung durch Profildichtung - Viton
Männlich - Männlich

BSP - BSP

With 60°-Cone
wd = Sealing by an Elastomer Profiled Ring - Viton
Male - Male - Parallel

Druck Pressure PN	Gewinde Thread		Ca. Maße Approx. Dimensions					Bestellzeichen Order-Code	Brutto-Preis Gross-Price Euro (€)
	G = BSP	G1 = BSP	L	L1	L2	D	SW		
400	1/8"-28	1/8"-28	23,0	8	8	4,5	14	1050508-02-02	7,50
400	1/4"-19	1/4"-19	29,0	10	10	6,0	19	1050508-04-04	7,65
400	3/8"-19	3/8"-19	35,0	12	12	9,0	22	1050508-06-06	8,50
400	1/2"-14	1/2"-14	41,0	14	14	13,0	27	1050508-08-08	11,70
400	3/4"-14	3/4"-14	46,0	16	16	18,0	32	1050508-12-12	18,45
400	1"-11	1"-11	52,0	18	18	23,5	41	1050508-16-16	28,95
200	1 1/4"-11	1 1/4"-11	58,0	20	20	30,0	50	1050508-20-20	41,25
200	1 1/2"-11	1 1/2"-11	61,0	22	22	37,0	55	1050508-24-24	53,70
100	2"-11	2"-11	67,0	25	25	45,0	70	1050508-32-32	112,20

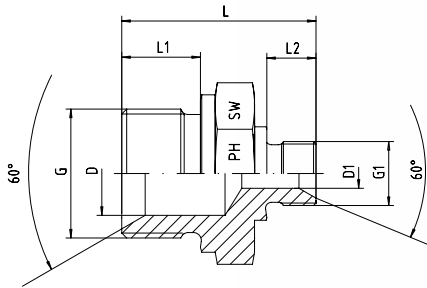


BSP - BSP - Flachdichtend
Mit angedrehter Dichtkante Form B
Männlich - Männlich

BSP - BSP - Flat face
With Sealing Shoulder Form B
Male - Male - Parallel

Druck Pressure PN	Gewinde Thread		Ca. Maße Approx. Dimensions					Bestellzeichen Order-Code	Brutto-Preis Gross-Price Euro (€)
	G = BSP	G1 = BSP	L	L1	L2	D	SW		
400	1/8"-28	1/8"-28	23,0	8	8	4,5	14	1050521-02-02	5,95
400	1/4"-19	1/4"-19	29,0	10	10	6,0	19	1050521-04-04	6,10
400	3/8"-19	3/8"-19	35,0	12	12	9,0	22	1050521-06-06	6,75
400	1/2"-14	1/2"-14	41,0	14	14	13,0	27	1050521-08-08	9,35
400	5/8"-14	5/8"-14	43,5	16	16	14,5	30	1050521-10-10	18,75
400	3/4"-14	3/4"-14	46,0	16	16	18,0	32	1050521-12-12	14,75
400	1"-11	1"-11	52,0	18	18	23,5	41	1050521-16-16	23,15
200	1 1/4"-11	1 1/4"-11	58,0	20	20	30,0	50	1050521-20-20	32,90
200	1 1/2"-11	1 1/2"-11	61,0	22	22	37,0	55	1050521-24-24	42,95
100	2"-11	2"-11	67,0	25	25	45,0	70	1050521-32-32	89,70
70	2 1/2"-11	2 1/2"-11	70,0	26	26	51,0	90	1050521-40-40	172,50

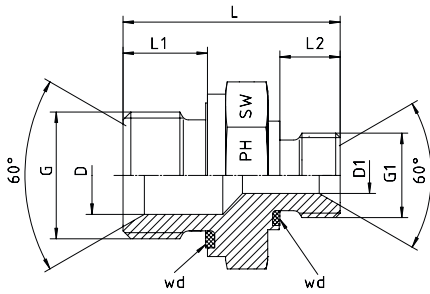
GERADE ADAPTER STRAIGHT ADAPTORS



BSP - BSP
Mit 60°-Innenkonus und angelegter Dichtkante Form B
Männlich - Männlich

BSP - BSP
With 60°-Cone and Sealing Shoulder Form B
BSP - Male - Male

Druck Pressure PN	Gewinde Thread		Ca. Maße Approx. Dimensions						Bestellzeichen Order-Code	Brutto-Preis Gross-Price Euro (€)
	G = BSP	G1 = BSP	L	L1	L2	D	D1	SW		
400	1/4"-19	1/8"-28	28,0	12,0	8	6,0	4,5	19	1050510-04-02	5,30
400	3/8"-19	1/8"-28	30,5	12,0	8	9,0	4,5	22	1050510-06-02	7,30
400	3/8"-19	1/4"-19	33,0	12,0	10	9,0	6,0	22	1050510-06-04	6,60
400	1/2"-14	1/8"-28	34,0	14,0	8	13	4,5	27	1050510-08-02	9,35
400	1/2"-14	1/4"-19	38,0	14,0	11	12,5	7,0	27	1050510-08-04	9,00
400	1/2"-14	3/8"-19	40,0	14,0	12	13,0	9,0	27	1050510-08-06	8,90
400	5/8"-14	3/8"-19	40,0	14,0	12	14,0	8,0	30	1050510-10-06	16,80
400	5/8"-14	1/2"-14	42,0	16,0	14	14,5	11,5	30	1050510-10-08	14,15
400	3/4"-14	1/4"-19	39,5	16,0	10	18,0	6,0	32	1050510-12-04	17,95
400	3/4"-14	3/8"-19	41,0	16,0	12	18,0	9,0	32	1050510-12-06	15,15
400	3/4"-14	1/2"-14	45,0	16,0	14	18,0	13,0	32	1050510-12-08	14,10
400	3/4"-14	5/8"-14	45,0	16,0	16	17,0	14,5	32	1050510-12-10	16,05
400	1"-11	3/8"-19	47,0	18,0	12	23,0	9,0	41	1050510-16-06	24,50
400	1"-11	1/2"-14	48,0	18,0	14	23,5	13,0	41	1050510-16-08	23,50
400	1"-11	3/4"-14	53,0	18,0	16	23,5	17,0	41	1050510-16-12	22,00
200	1 1/4"-11	1/2"-14	51,0	20,0	14	30,0	13,0	50	1050510-20-08	37,95
200	1 1/4"-11	3/4"-14	53,5	20,0	16	30,5	18,0	50	1050510-20-12	33,50
200	1 1/4"-11	1"-11	58,0	20,0	18	30,5	23,0	50	1050510-20-16	31,50
200	1 1/2"-11	3/4"-14	55,0	22,0	16	37,0	17,0	55	1050510-24-12	56,80
200	1 1/2"-11	1"-11	57,0	22,0	18	37,0	23,5	55	1050510-24-16	50,75
200	1 1/2"-11	1 1/4"-11	61,0	22,0	20	37,0	30,0	55	1050510-24-20	48,50
100	2"-11	1"-11	62,0	25,0	18	43,0	23,5	70	1050510-32-16	99,90
100	2"-11	1 1/4"-11	62,0	25,0	20	45,0	30,0	70	1050510-32-20	92,50
100	2"-11	1 1/2"-11	64,0	25,0	22	45,0	37,0	70	1050510-32-24	82,00



BSP - BSP

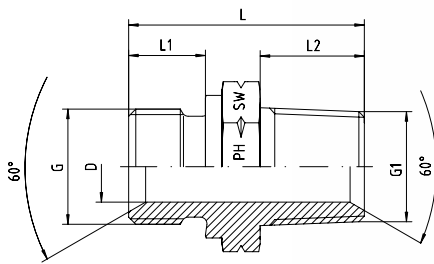
Mit 60°-Innenkonus
wd = Abdichtung durch Profildichtung - Viton
Männlich - Männlich

BSP - BSP

With 60°-Cone
wd = Sealing by an Elastomer Profiled Ring - Viton
Male - Male - Parallel

Druck Pressure PN	Gewinde Thread		Ca. Maße Approx. Dimensions						Bestellzeichen Order-Code	Brutto-Preis Gross-Price Euro (€)
	G = BSP	G1 = BSP	L	L1	L2	D	D1	SW		
400	1/4"-19	1/8"-28	28,0	12,0	8	6,0	4,5	19	1050508-04-02	8,75
400	3/8"-19	1/8"-28	30,5	12,0	8	9,0	4,5	22	1050508-06-02	12,10
400	3/8"-19	1/4"-19	33,0	12,0	10	9,0	6,0	22	1050508-06-04	10,90
400	1/2"-14	1/4"-19	38,0	14,0	11	12,5	7,0	27	1050508-08-04	14,85
400	1/2"-14	3/8"-19	40,0	14,0	12	13,0	9,0	27	1050508-08-06	14,85
400	3/4"-14	1/4"-19	39,5	16,0	10	18,0	6,0	32	1050508-12-04	29,70
400	3/4"-14	3/8"-19	41,0	16,0	12	18,0	9,0	32	1050508-12-06	25,30
400	3/4"-14	1/2"-14	45,0	16,0	14	18,0	13,0	32	1050508-12-08	23,30
400	1"-11	3/8"-19	47,0	18,0	12	23,0	9,0	41	1050508-16-06	41,80
400	1"-11	1/2"-14	48,0	18,0	14	23,5	13,0	41	1050508-16-08	40,70
400	1"-11	3/4"-14	53,0	18,0	16	23,5	17,0	41	1050508-16-12	39,60
200	1 1/4"-11	1/2"-14	51,0	20,0	14	30,0	13,0	50	1050508-20-08	62,70
200	1 1/4"-11	3/4"-14	53,5	20,0	16	30,5	18,0	50	1050508-20-12	61,60
200	1 1/4"-11	1"-11	58,0	20,0	18	30,5	23,0	50	1050508-20-16	60,50
200	1 1/2"-11	3/4"-14	55,0	22,0	16	37,0	17,0	55	1050508-24-12	97,90
200	1 1/2"-11	1"-11	57,0	22,0	18	37,0	23,5	55	1050508-24-16	95,70
200	1 1/2"-11	1 1/4"-11	61,0	22,0	20	37,0	30,0	55	1050508-24-20	94,60
100	2"-11	1"-11	62,0	25,0	18	43,0	23,5	70	1050508-32-16	176,00
100	2"-11	1 1/4"-11	62,0	25,0	20	45,0	30,0	70	1050508-32-20	176,00
100	2"-11	1 1/2"-11	64,0	25,0	22	45,0	37,0	70	1050508-32-24	176,00

GERADE ADAPTER STRAIGHT ADAPTORS

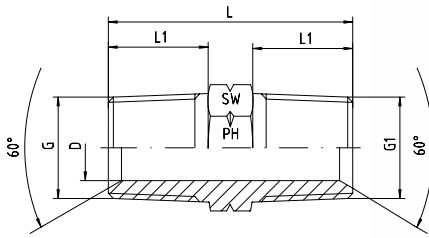


BSP - Zylindrisch - Männlich
mit 60°-Konus und angedrehter Dichtkante Form B
NPT - Männlich mit 60°-Konus
Andere Größen auf Anfrage!

BSP - Male
with 60°-Cone and Sealing Shoulder Form B
NPT - Male with 60°-Cone
Other sizes on request!

Druck Pressure PN	Gewinde Thread		Ca. Maße Approx. Dimensions					Bestellzeichen Order-Code BSP x NPT	Brutto-Preis Gross-Price Euro (€)
	G = BSP	G1 = NPT	L	L1	L2	D	SW		
400	1/8"-28	1/8"-27	24,5	8	10,0	4,0	14	1052810-02-02	6,10
400	1/4"-19	1/4"-18	32,5	10	15,0	6,0	19	1052810-04-04	5,37
400	3/8"-19	3/8"-18	38,0	12	15,3	9,0	22	1052810-06-06	6,75
400	1/2"-14	1/2"-14	43,0	14	20,0	12,5	27	1052810-08-08	9,20
400	3/4"-14	3/4"-14	47,0	16	20,0	17,5	32	1052810-12-12	12,50
400	1"-11	1"-11,5	54,5	18	25,0	22,5	41	1052810-16-16	20,00
200	1 1/4"-11	1 1/4"-11,5	66,0	20	25,5	30,0	50	1052810-20-20	32,90
200	1 1/2"-11	1 1/2"-11,5	64,0	22	26,0	37,0	55	1052810-24-24	55,50
100	2"-11	2"-11,5	66,0	25	26,0	45,0	70	1052810-32-32	99,00

Druck Pressure PN	Gewinde Thread		Ca. Maße Approx. Dimensions					Bestellzeichen Order-Code BSP x NPT	Brutto-Preis Gross-Price Euro (€)
	G = BSP	G1 = NPT	L	L1	L2	D	SW		
400	1/8"-28	1/4"-18	30,0	8	15,0	4,0	14	1052810-02-04	10,40
400	1/4"-19	1/8"-27	27,5	10	10,0	4,0	19	1052810-04-02	10,40
400	1/4"-19	3/8"-18	33,0	10	15,3	6,0	19	1052810-04-06	8,70
400	1/4"-19	1/2"-14	40,0	10	20,0	6,0	22	1052810-04-08	11,90
400	3/8"-19	1/4"-18	35,5	12	15,0	7,0	22	1052810-06-04	8,70
400	3/8"-19	1/2"-14	42,0	12	20,0	9,0	22	1052810-06-08	10,50
400	3/8"-19	3/4"-14	42,0	12	20,0	9,0	27	1052810-06-12	18,75
400	1/2"-14	1/4"-18	40,0	14	15,0	7,0	27	1052810-08-04	13,95
400	1/2"-14	3/8"-18	40,0	14	15,3	9,0	27	1052810-08-06	11,40
400	1/2"-14	3/4"-14	45,0	14	20,0	12,0	27	1052810-08-12	18,50
400	3/4"-14	1/2"-14	45,0	16	20,0	12,5	32	1052810-12-08	19,40
400	3/4"-14	1"-11,5	52,0	16	25,0	17,5	36	1052810-12-16	23,95
400	1"-11	3/8"-18	45,0	18	15,3	9,0	41	1052810-16-06	28,75
400	1"-11	1/2"-14	50,0	18	20,0	12,5	41	1052810-16-08	23,95
400	1"-11	3/4"-14	50,0	18	20,0	15,0	41	1052810-16-12	23,95



NPT - Männlich mit 60°-Konus

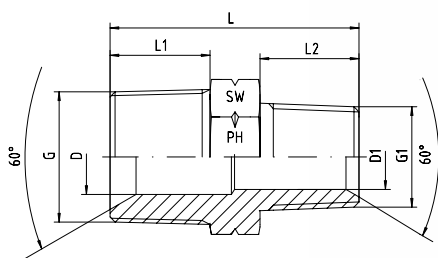
NPT - Male with 60°-Cone

Druck Pressure PN	Gewinde Thread		Ca. Maße Approx. Dimensions				Bestellzeichen Order-Code	Brutto-Preis Gross-Price Euro (€)
	G = NPT	G1 = NPT	L	L1	D	SW		
630	1/8"-27	1/8"-27	27,0	10,0	5,0	12	1282810-02-02	7,50
630	1/4"-18	1/4"-18	36,5	15,0	7,0	14	1282810-04-04	6,40
630	3/8"-18	3/8"-18	36,5	15,3	9,0	19	1282810-06-06	7,10
630	1/2"-14	1/2"-14	48,4	20,0	13,5	22	1282810-08-08	8,65
630	3/4"-14	3/4"-14	50,0	20,0	18,0	27	1282810-12-12	13,25
400	1"-11,5	1"-11,5	59,0	25,0	21,0	36	1282810-16-16	18,10
400	1 1/4"-11,5	1 1/4"-11,5	63,0	25,5	31,5	46	1282810-20-20	39,90
400	1 1/2"-11,5	1 1/2"-11,5	65,0	26,0	36,0	50	1282810-24-24	55,00
315	2"-11,5	2"-11,5	68,0	26,0	46,0	65	1282810-32-32	85,00

GERADE ADAPTER STRAIGHT ADAPTORS



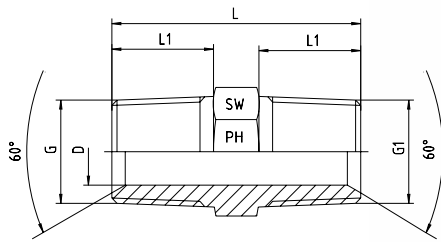
EDELSTAHL / STAINLESS STEEL
VERBINDUNGSTECHNIK
FLUID CONNECTORS



NPT - Männlich mit 60-Konus

NPT - Male with 60°-Cone

Druck Pressure PN	Gewinde Thread		Ca. Maße Approx. Dimensions						Bestellzeichen Order-Code	Brutto-Preis Gross-Price Euro (€)
	G = NPT	G1 = NPT	L	L1	L2	D	D1	SW		
630	1/4"-18	1/8"-27	32,0	15,0	10,0	7,0	5,0	14	1282810-04-02	12,00
630	3/8"-18	1/4"-18	36,5	15,3	15,0	7,0	7,0	19	1282810-06-04	12,00
630	1/2"-14	1/4"-18	43,0	20,0	15,0	7,0	7,0	22	1282810-08-04	13,95
630	1/2"-14	3/8"-18	43,7	20,0	15,3	13,5	8,0	22	1282810-08-06	13,00
630	3/4"-14	1/2"-14	50,0	20,0	20,0	18,0	13,5	27	1282810-12-08	18,90
400	1"-11,5	1/2"-14	54,0	25,0	20,0	21,0	13,5	36	1282810-16-08	31,95
400	1"-11,5	3/4"-14	54,2	25,0	20,0	21,0	18,0	36	1282810-16-12	29,00



BSP - Kegelig
BSP - Kegelig

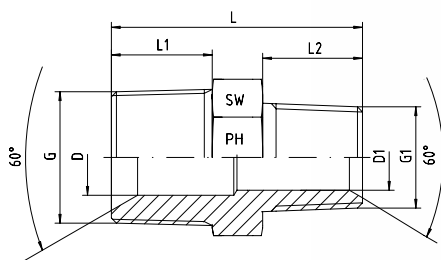
BSP - Taper
BSP - Taper

Druck Pressure PN	Gewinde Thread		Ca. Maße Approx. Dimensions				Bestellzeichen Order-Code	Brutto-Preis Gross-Price Euro (€)
	G = BSPT	G1 = BSPT	L	L1	D	SW		
400	1/8"-28	1/8"-28	22,0	8	4,0	12	1070710-02-02	7,50
400	1/4"-19	1/4"-19	30,0	12	5,0	14	1070710-04-04	6,30
400	3/8"-19	3/8"-19	31,0	12	8,0	19	1070710-06-06	6,85
400	1/2"-14	1/2"-14	38,0	14	13,5	22	1070710-08-08	8,80
400	3/4"-14	3/4"-14	43,0	16	18,0	27	1070710-12-12	13,65
400	1"-11	1"-11	47,0	18	22,5	36	1070710-16-16	18,75
200	1 1/4"-11	1 1/4"-11	52,0	20	29,0	46	1070710-20-20	39,90
200	1 1/2"-11	1 1/2"-11	58,0	22	33,5	50	1070710-24-24	55,00
100	2"-11	2"-11	68,0	26	46,0	65	1070710-32-32	85,00

GERADE ADAPTER STRAIGHT ADAPTORS



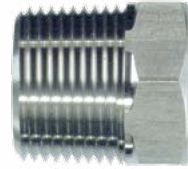
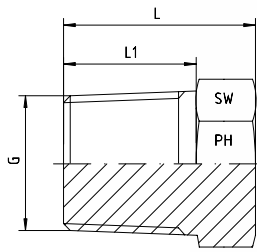
EDELSTAHL / STAINLESS STEEL
VERBINDUNGSTECHNIK
FLUID CONNECTORS



BSP - Kegelig
BSP - Kegelig

BSP - Taper
BSP - Taper

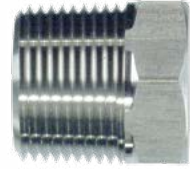
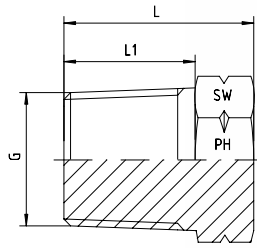
Druck Pressure PN	Gewinde Thread		Ca. Maße Approx. Dimensions						Bestellzeichen Order-Code	Brutto-Preis Gross-Price Euro (€)
	G = BSPT	G1 = BSPT	L	L1	L2	D	D1	SW		
400	1/4"-19	1/8"-28	26,0	12	8	5,0	5,0	14	1070710-04-02	12,00
400	3/8"-19	1/4"-19	31,0	12	12	8,0	8,0	19	1070710-06-04	10,90
400	1/2"-14	3/8"-19	34,0	14	12	11,5	8,0	22	1070710-08-06	11,50
400	3/4"-14	1/2"-14	39,0	16	14	18,0	13,5	27	1070710-12-08	18,90
400	1"-11	3/4"-14	45,0	18	19	22,5	17,0	36	1070710-16-12	29,00
200	1 1/4"-11	1"-11	50,0	20	18	29,0	22,5	46	1070710-20-16	45,00
200	1 1/2"-11	1 1/4"-11	56,0	22	20	33,5	29,0	50	1070710-24-20	63,90



BSP - Kegelig

BSP - Taper

Druck Pressure PN	Gewinde Thread G = BSPT	Ca. Maße Approx. Dimensions			Bestellzeichen Order-Code	Brutto-Preis Gross-Price Euro (€)
		L	L1	SW		
400	1/8"-28	14	8	12	5070010-02	4,50
400	1/4"-19	18	12	14	5070010-04	4,60
400	3/8"-19	19	12	17	5070010-06	5,30
400	1/2"-14	27	19	22	5070010-08	6,50
400	3/4"-14	29	19	27	5070010-12	8,75
400	1"-11	29	18	36	5070010-16	13,75
200	1 1/4"-11	32	20	46	5070010-20	21,25
200	1 1/2"-11	36	22	50	5070010-24	27,50
100	2"-11	40	26	65	5070010-32	56,50



NPT - Männlich

NPT - Male

Druck Pressure PN	Gewinde Thread G = NPT	Ca. Maße Approx. Dimensions			Bestellzeichen Order-Code	Brutto-Preis Gross-Price Euro (€)
		L	L1	SW		
630	1/8"-27	15	10,0	12	5280010-02	4,50
630	1/4"-18	20	15,0	14	5280010-04	4,60
630	3/8"-18	22	15,3	17	5280010-06	5,30
630	1/2"-14	27	20,0	22	5280010-08	6,50
630	3/4"-14	29	20,0	27	5280010-12	8,75
400	1"-11,5	33	25,0	36	5280010-16	13,75
400	1 1/4"-11,5	33	25,5	46	5280010-20	21,25
400	1 1/2"-11,5	41	26,0	50	5280010-24	27,50
315	2"-11,5	44	26,0	65	5280010-32	56,50

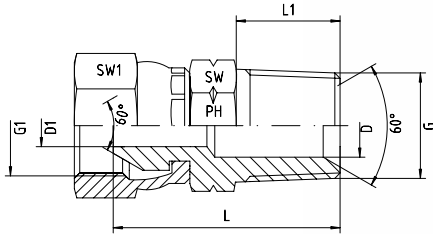


BSP - Weiblich
mit drehbarer Mutter für 60°-Gegenanschluss
BSP - Kegelig - Männlich

BSP - Female
with Swivel Nut for 60°-Connection
BSP - Taper - Male

Druck Pressure PN	Gewinde Thread		Ca. Maße Approx. Dimensions					Bestellzeichen Order-Code	Brutto-Preis Gross-Price Euro (€)
	G1 = BSP	G = BSPT	L	L1	D	SW	SW1		
400	1/8"-28	1/8"-28	23,0	8	4,0	12	14	2070511-02-02	15,80
400	1/4"-19	1/4"-19	28,0	12	5,0	14	19	2070511-04-04	15,80
400	3/8"-19	3/8"-19	30,6	12	8,0	19	22	2070511-06-06	18,30
400	1/2"-14	1/2"-14	37,0	14	9,5	24	27	2070511-08-08	22,55
400	3/4"-14	3/4"-14	39,0	16	16,5	27	32	2070511-12-12	26,90
400	1"-11	1"-11	44,3	18	22,5	36	41	2070511-16-16	35,30
200	1 1/4"-11	1 1/4"-11	51,9	20	29,0	46	50	2070511-20-20	70,55
200	1 1/2"-11	1 1/2"-11	54,6	22	33,5	50	55	2070511-24-24	95,95
100	2"-11	2"-11	69,0	26	42,0	65	70	2070511-32-32	130,55

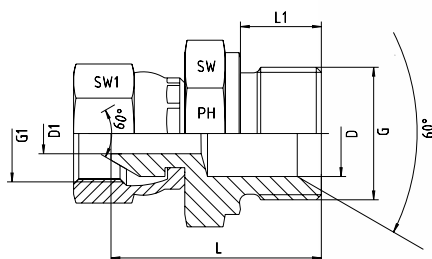
GERADE ADAPTER STRAIGHT ADAPTORS



BSP - Weiblich
mit drehbarer Mutter für 60°-Gegenanschluss
NPT - Männlich

BSP - Female
with Swivel Nut for 60°-Connection
NPT - Male

Druck Pressure PN	Gewinde Thread		Ca. Maße Approx. Dimensions						Bestellzeichen Order-Code BSP x NPT	Brutto-Preis Gross-Price Euro (€)
	G1 = BSP	G = NPT	L	L1	D	D1	SW	SW1		
400	1/8"-28	1/8"-27	25,0	10,0	4,0	4,0	12	14	2280511-02-02	14,80
400	1/4"-19	1/4"-18	32,0	15,0	7,0	5,0	14	19	2280511-04-04	14,80
400	1/4"-19	3/8"-18	32,0	15,3	10,3	5,0	19	19	2280511-04-06	18,00
400	3/8"-19	1/4"-18	33,6	15,0	7,0	7,0	17	22	2280511-06-04	18,00
400	3/8"-19	3/8"-18	33,0	15,3	10,0	8,0	19	22	2280511-06-06	17,00
400	3/8"-19	1/2"-14	40,8	20,0	13,5	8,0	22	22	2280511-06-08	21,80
400	1/2"-14	3/8"-18	34,8	15,3	10,3	9,5	19	27	2280511-08-06	21,80
400	1/2"-14	1/2"-14	42,0	20,0	13,5	9,5	22	27	2280511-08-08	19,95
400	1/2"-14	3/4"-14	41,0	20,0	16,5	9,5	27	27	2280511-08-12	26,50
400	3/4"-14	1/2"-14	43,0	20,0	13,5	16,5	27	32	2280511-12-08	26,50
400	3/4"-14	3/4"-14	43,0	20,0	16,5	16,5	27	32	2280511-12-12	25,00
400	3/4"-14	1"-11,5	48,5	25,0	24,0	16,5	36	32	2280511-12-16	38,50
400	1"-11	1"-11	49,5	25,0	24,0	21,0	36	41	2280511-16-16	33,90
200	1 1/4"-11	1 1/4"-11,5	53,0	25,5	28,0	28,0	46	50	2280511-20-20	68,50
200	1 1/2"-11	1 1/2"-11,5	57,0	26,0	32,5	32,5	50	55	2280511-24-24	90,45
100	2"-11	2"-11,5	69,0	26,0	42,0	42,0	65	70	2280511-32-32	145,00



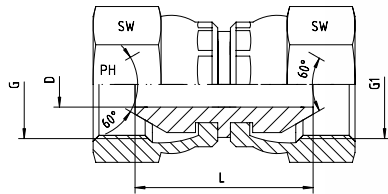
BSP - Weiblich mit drehbarer Mutter
BSP - Männlich
mit 60°-Konus und angedrehter Dichtkante Form B

BSP - Female with Swivel Nut
BSP - Male
with 60°-Cone and Sealing Shoulder Form B

Druck Pressure PN	Gewinde Thread		Ca. Maße Approx. Dimensions						Bestellzeichen Order-Code G1 x G	Brutto-Preis Gross-Price Euro (€)
	G1	G	L	L1	D	D1	SW	SW1		
400	1/8"-28	1/8"-28	23,5	8	4,0	4,0	14	14	2050511-02-02	10,95
400	1/8"-28	1/4"-19	27,5	12	4,0	4,0	19	14	2050511-02-04	12,95
400	1/4"-19	1/8"-28	27,0	8	4,0	4,0	14	19	2050511-04-02	9,75
400	1/4"-19	1/4"-19	30,0	12	5,0	5,0	19	19	2050511-04-04	9,75
400	1/4"-19	3/8"-19	31,5	12	9,0	5,0	22	19	2050511-04-06	13,95
400	1/4"-19	1/2"-14	35,5	14	11,5	5,0	27	19	2050511-04-08	23,95
400	3/8"-19	1/8"-28	26,0	8	4,5	4,5	17	19	2050511-06-02	12,95
400	3/8"-19	1/4"-19	31,5	12	5,0	8,0	19	22	2050511-06-04	12,70
400	3/8"-19	3/8"-19	32,5	12	8,0	8,0	22	22	2050511-06-06	11,90
400	3/8"-19	1/2"-14	37,0	14	11,5	8,0	27	22	2050511-06-08	18,75
400	1/2"-14	1/4"-19	31,5	12	5,0	11,0	19	27	2050511-08-04	23,95
400	1/2"-14	3/8"-19	32,5	12	9,0	9,0	22	27	2050511-08-06	15,30
400	1/2"-14	1/2"-14	36,0	14	11,0	11,0	27	27	2050511-08-08	15,40
400	1/2"-14	3/4"-14	39,5	16	11,0	11,0	32	27	2050511-08-12	27,50
400	3/4"-14	1/2"-14	42,0	14	11,5	16,0	27	32	2050511-12-08	22,70
400	3/4"-14	3/4"-14	41,0	16	16,5	16,5	32	32	2050511-12-12	19,50
400	3/4"-14	1"-11	45,0	18	22,5	16,5	41	32	2050511-12-16	41,60
400	1"-11	3/4"-14	44,0	18	17,0	22,0	32	41	2050511-16-12	38,00
400	1"-11	1"-11	45,5	18	22,0	22,0	41	41	2050511-16-16	35,75
200	1"-11	1 1/4"-11	49,5	20	29,0	22,5	50	41	2050511-16-20	78,00
200	1 1/4"-11	1"-11	53,0	18	22,0	22,0	41	50	2050511-20-16	59,90
200	1 1/4"-11	1 1/4"-11	48,5	20	28,0	28,0	50	50	2050511-20-20	59,25
200	1 1/2"-11	1 1/2"-11	53,0	22	33,0	33,0	55	55	2050511-24-24	73,50
100	2"-11	2"-11	72,0	23	42,0	42,0	70	70	2050511-32-32	145,00

GERADE ADAPTER - DKR

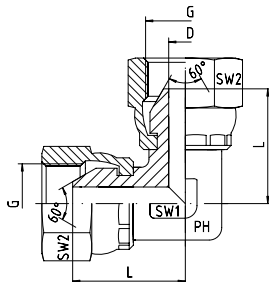
STRAIGHT ADAPTORS - DKR



Weiblich - BSP - BSP
mit drehbarer Mutter an beiden Seiten

Female - BSP - BSP
with Swivel Nut at both sides

Druck Pressure PN	Gewinde Thread		Ca. Maße Approx. Dimensions			Bestellzeichen Order-Code	Brutto-Preis Gross-Price Euro (€)
	G	G1	L	D	SW		
400	1/8"-28	1/8"-28	21	4,0	14	3050511-02-02	15,45
400	1/4"-19	1/4"-19	26	5,0	19	3050511-04-04	13,95
400	3/8"-19	3/8"-19	30	8,0	22	3050511-06-06	16,15
400	1/2"-14	1/2"-14	29	11,0	27	3050511-08-08	17,15
400	3/4"-14	3/4"-14	34	16,5	32	3050511-12-12	24,85
400	1"-11	1"-11	36	22,0	41	3050511-16-16	40,85
200	1 1/4"-11	1 1/4"-11	38	28,0	50	3050511-20-20	78,75
200	1 1/2"-11	1 1/2"-11	51	34,0	55	3050511-24-24	113,60
100	2"-11	2"-11	66	42,0	70	3050511-32-32	189,50



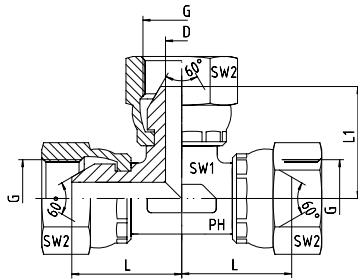
Weiblich - BSP - BSP
 mit drehbarer Mutter an beiden Seiten

Female - BSP - BSP
 with Swivel Nut at both sides

Druck Pressure PN	Gewinde Thread G	Ca. Maße Approx. Dimensions				Bestellzeichen Order-Code	Brutto-Preis Gross-Price Euro (€)
		L	D	SW1	SW2		
400	1/8"-28	18,0	4,0	12	14	4050511-02	32,90
400	1/4"-19	23,5	6,0	14	19	4050511-04	30,10
400	3/8"-19	25,5	8,0	17	22	4050511-06	28,90
400	1/2"-14	29,5	11,0	19	27	4050511-08	39,50
400	3/4"-14	37,0	16,0	27	32	4050511-12	53,30
400	1"-11	43,0	22,0	36	41	4050511-16	80,20
200	1 1/4"-11	51,0	28,0	41	50	4050511-20	155,00
200	1 1/2"-11	50,0	33,5	50	55	4050511-24	225,00
100	2"-11	80,0	42,0	65	70	4050511-32	414,00

T-ADAPTER - DKR

T-ADAPTORS - DKR



Weiblich - BSP - BSP - BSP
mit drehbarer Mutter an allen Seiten

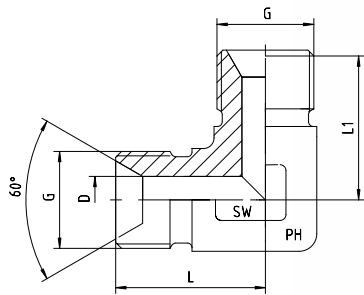
Female - BSP - BSP - BSP
with Swivel Nut at both sides

Druck Pressure PN	Gewinde Thread G	Ca. Maße Approx. Dimensions					Bestellzeichen Order-Code	Brutto-Preis Gross-Price Euro (€)
		L	L1	D	SW1	SW2		
400	1/8"-28	18,0	18,0	4,0	12	14	4150511-02	49,50
400	1/4"-19	23,5	23,5	6,0	14	19	4150511-04	38,75
400	3/8"-19	25,5	25,5	8,0	17	22	4150511-06	41,47
400	1/2"-14	29,5	29,5	11,0	19	27	4150511-08	52,90
400	3/4"-14	37,0	37,0	16,0	27	32	4150511-12	78,75
400	1"-11	43,0	43,0	22,0	36	41	4150511-16	101,25
200	1 1/4"-11	51,0	51,0	28,0	41	50	4150511-20	170,20
200	1 1/2"-11	50,0	50,0	33,5	50	55	4150511-24	218,10
100	2"-11	80,0	80,0	42,0	65	70	4150511-32	815,00



Druck Pressure PN	Gewinde Thread G	Ca. Maße Approx. Dimensions					Bestellzeichen Order-Code	Brutto-Preis Gross-Price Euro (€)
		L	L1	D	SW1	SW2		
400	1/8"-28	18,0	18,0	4,0	12		4250511-02	99,00
400	1/4"-19	23,5	23,5	6,0	14	19	4250511-04	77,50
400	3/8"-19	25,5	25,5	8,0	17	22	4250511-06	82,95
400	1/2"-14	29,5	29,5	11,0	19	27	4250511-08	105,80
400	3/4"-14	37,0	37,0	16,0	27	32	4250511-12	157,50
400	1"-11	43,0	43,0	22,0	36	41	4250511-16	202,50
200	1 1/4"-11					50	4250511-20	*
200	1 1/2"-11					55	4250511-24	*
	2"-11					70	4250511-32	*

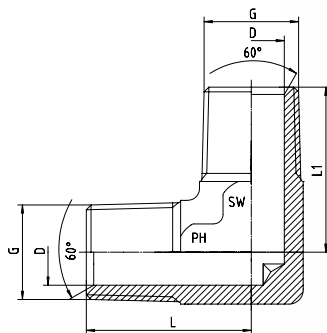
WINKEL-ADAPTER ELBOW-ADAPTORS



Männlich - BSP - BSP
mit 60°-Konus

Male - BSP - BSP
with 60°-Cone

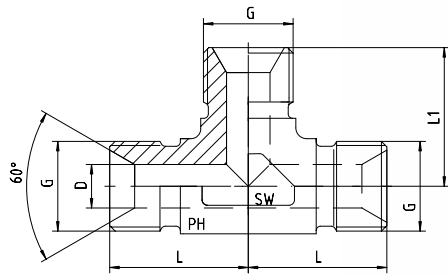
Druck Pressure PN	Gewinde Thread G	Ca. Maße Approx. Dimensions				Bestellzeichen Order-Code	Brutto-Preis Gross-Price Euro (€)
		L	L1	D	SW		
400	1/8"-28	20,0	20,0	4,0	12	1350510-02	10,00
400	1/4"-19	24,5	24,5	6,0	14	1350510-04	11,00
400	3/8"-19	25,5	25,5	8,0	17	1350510-06	15,50
400	1/2"-14	29,5	29,5	11,0	19	1350510-08	19,50
400	3/4"-14	37,0	37,0	16,0	27	1350510-12	37,50
400	1"-11	43,0	43,0	22,0	36	1350510-16	44,90
200	1 1/4"-11	51,0	51,0	28,5	41	1350510-20	78,90
200	1 1/2"-11	59,0	59,0	33,5	50	1350510-24	150,00
100	2"-11	77,5	77,5	45,0	65	1350510-32	290,00



Männlich - NPT - NPT
mit 60°-Konus

Male - NPT - NPT
with 60°-Cone

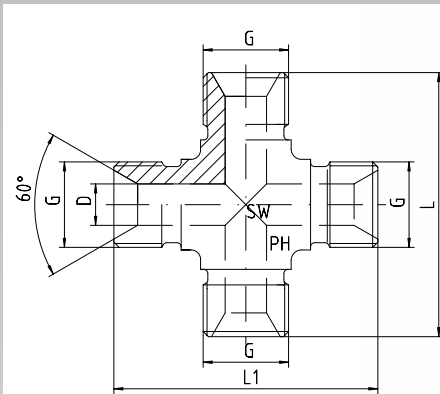
Druck Pressure PN	Gewinde Thread G = NPT	Ca. Maße Approx. Dimensions				Bestellzeichen Order-Code	Brutto-Preis Gross-Price Euro (€)
		L	L1	D	SW		
420	1/8"-27	20,0	20,0	5,0	12	1350511-02	10,00
420	1/4"-18	28,0	28,0	7,0	14	1350511-04	12,25
420	3/8"-18	31,0	31,0	10,0	19	1350511-06	16,25
420	1/2"-14	35,0	35,0	14,0	24	1350511-08	23,75
420	3/4"-14	40,0	40,0	18,0	36	1350511-12	45,00
420	1"-11,5	50,0	50,0	24,0	41	1350511-16	80,00
315	1 1/4"-11,5	56,0	56,0	30,0	50	1350511-20	165,00
315	1 1/2"-11,5	59,0	59,0	37,0	50	1350511-24	189,00
315	2"-11,5	76,0	76,0	45,0	65	1350511-32	395,00



Männlich - BSP - BSP - BSP
mit 60°-Konus

Male - BSP - BSP - BSP
with 60°-Cone

Druck Pressure PN	Gewinde Thread G	Ca. Maße Approx. Dimensions				Bestellzeichen Order-Code	Brutto-Preis Gross-Price Euro (€)
		L	L1	D	SW		
400	1/8"-28	20,0	20,0	4,0	12	1450510-02	18,30
400	1/4"-19	24,5	24,5	6,0	14	1450510-04	18,50
400	3/8"-19	25,5	25,5	8,0	17	1450510-06	21,50
400	1/2"-14	29,5	29,5	11,0	19	1450510-08	22,00
400	3/4"-14	37,0	37,0	16,0	27	1450510-12	38,60
400	1"-11	43,0	43,0	22,0	36	1450510-16	53,60
200	1 1/4"-11	51,0	51,0	28,5	41	1450510-20	92,40
200	1 1/2"-11	59,0	59,0	33,5	50	1450510-24	159,20
100	2"-11	77,5	77,5	45,0	65	1450510-32	357,50



Männlich - BSP
 alle Seiten mit 60°-Konus

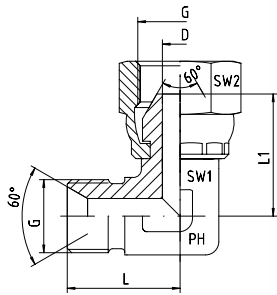
Male - BSP
 all sides with 60°-Cone

Druck Pressure PN	Gewinde Thread G	Ca. Maße Approx. Dimensions				Bestellzeichen Order-Code	Brutto-Preis Gross-Price Euro (€)
		L	L1	D	SW		
400	1/8"-28					1550510-02	114,30
400	1/4"-19					1550510-04	114,30
400	3/8"-19					1550510-06	117,32
400	1/2"-14					1550510-08	125,70
400	3/4"-14					1550510-12	172,90
400	1"-11					1550510-16	262,05
200	1 1/4"-11					1550510-20	367,50
200	1 1/2"-11					1550510-24	400,10
	2"-11					1550510-32	995,00

WE-KOMPAKT-WINKEL-ADAPTER - 90° WE-BLOCK-ELBOW-ADAPTORS - 90°



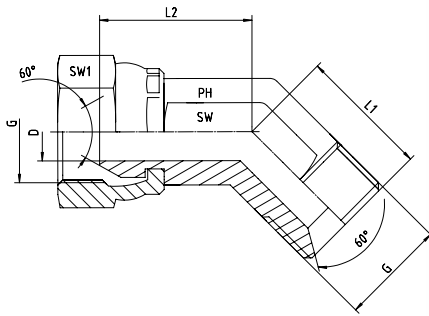
EDELSTAHL / STAINLESS STEEL
VERBINDUNGSTECHNIK
FLUID CONNECTORS



Männlich - Starr mit 60°-Konus
Weiblich - Mit drehbarer Mutter

Male - Fixed with 60°-Cone
Female - With Swivel Nut

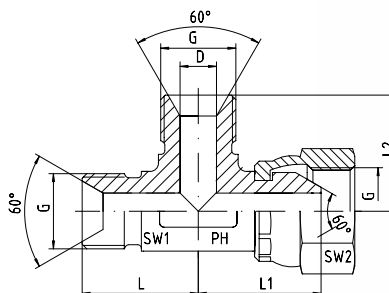
Druck Pressure PN	Gewinde Thread G	Ca. Maße Approx. Dimensions					Bestellzeichen Order-Code	Brutto-Preis Gross-Price Euro (€)
		L	L1	D	SW1	SW2		
400	1/8"-28	20,0	18,0	4,0	12	14	1560510-02	19,35
400	1/4"-19	24,5	23,5	6,0	14	19	1560510-04	20,60
400	3/8"-19	25,5	25,5	8,0	17	22	1560510-06	23,30
400	1/2"-14	29,5	29,5	11,0	19	27	1560510-08	27,60
400	3/4"-14	37,0	37,0	16,0	27	32	1560510-12	48,55
400	1"-11	43,0	43,0	22,0	36	41	1560510-16	59,20
200	1 1/4"-11	51,0	51,0	28,0	41	50	1560510-20	74,55
200	1 1/2"-11	59,0	50,0	33,5	50	55	1560510-24	155,00
100	2"-11	77,5	80,0	42,0	65	70	1560510-32	345,00



Männlich - Starr mit 60°-Konus
Weiblich - Mit drehbarer Mutter

Male - Fixed with 60°-Cone
Female - With Swivel Nut

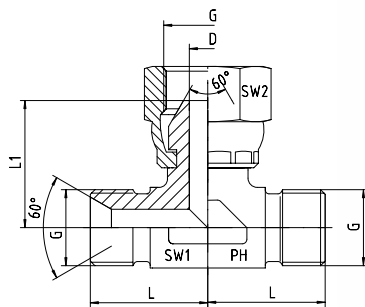
Druck Pressure PN	Gewinde Thread G	Ca. Maße Approx. Dimensions					Bestellzeichen Order-Code	Brutto-Preis Gross-Price Euro (€)
		L1	L2	D	SW	SW1		
400	1/8"-28	14,0	15,0	3,5	12	14	1545510-02	25,15
400	1/4"-19	21,0	19,0	5,0	14	19	1545510-04	26,80
400	3/8"-19	21,5	20,5	8,0	16	22	1545510-06	30,30
400	1/2"-14	23,5	22,5	11,0	22	27	1545510-08	35,90
400	3/4"-14	31,0	25,0	17,0	27	32	1545510-12	63,10
400	1"-11	36,5	27,0	22,0	33	41	1545510-16	76,95
200	1 1/4"-11						1545510-20	320,00
200	1 1/2"-11						1545510-24	436,00
100	2"-11	56,4	59,0	42,0	65	70	1545510-32	614,00



Männlich - Starr - BSP mit 60°-Konus
Weiblich - Drehbar - BSP

Male - Fixed - BSP with 60°-Cone
Female - Swivel - BSP

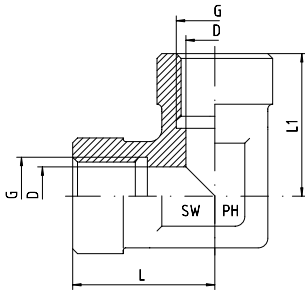
Druck Pressure PN	Gewinde Thread G	Ca. Maße Approx. Dimensions						Bestellzeichen Order-Code	Brutto-Preis Gross-Price Euro (€)
		L	L1	L2	D	SW1	SW2		
400	1/8"-28	20,0	18,0	20,0	4,0	12	14	1570510-02	37,50
400	1/4"-19	24,5	24,5	24,5	6,0	14	19	1570510-04	29,95
400	3/8"-19	25,5	25,5	25,5	8,0	17	22	1570510-06	32,30
400	1/2"-14	29,5	29,5	29,5	11,0	19	27	1570510-08	39,00
400	3/4"-14	37,0	37,0	37,0	16,0	27	32	1570510-12	59,80
400	1"-11	43,0	43,0	43,0	22,0	36	41	1570510-16	85,00
200	1 1/4"-11	51,0	51,0	51,0	28,0	41	50	1570510-20	110,90
200	1 1/2"-11	59,0	50,0	59,0	33,5	50	55	1570510-24	155,00
100	2"-11	77,5	80,0	77,5	42,0	65	70	1570510-32	750,00



Männlich - Starr - BSP mit 60°-Konus
Weiblich - Drehbar - BSP

Male - Fixed - BSP with 60°-Cone
Female - Swivel - BSP

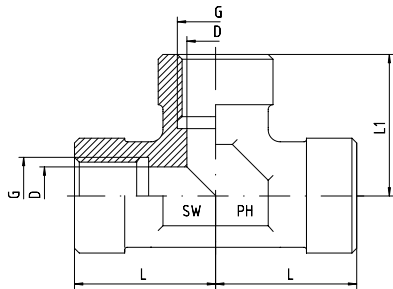
Druck Pressure PN	Gewinde Thread G	Ca. Maße Approx. Dimensions					Bestellzeichen Order-Code	Brutto-Preis Gross-Price Euro (€)
		L	L1	D	SW1	SW2		
400	1/8"-28	20,0	18,0	4,0	12	14	1580510-02	37,50
400	1/4"-19	24,5	23,5	6,0	14	19	1580510-04	29,95
400	3/8"-19	25,5	25,5	8,0	17	22	1580510-06	32,30
400	1/2"-14	29,5	29,5	11,0	19	27	1580510-08	39,00
400	3/4"-14	37,0	37,0	16,0	27	32	1580510-12	59,80
400	1"-11	43,0	43,0	22,0	36	41	1580510-16	85,00
200	1 1/4"-11	51,0	51,0	28,0	41	50	1580510-20	110,90
200	1 1/2"-11	59,0	50,0	33,5	50	55	1580510-24	155,00
100	2"-11	77,5	80,0	42,0	65	70	1580510-32	750,00



Weiblich - BSP - Zylindrisch - BSP - Zylindrisch

Female - BSP - Parallel - BSP - Parallel

Druck Pressure PN	Gewinde Thread G	Ca. Maße Approx. Dimensions				Bestellzeichen Order-Code	Brutto-Preis Gross-Price Euro (€)
		L	L1	D	SW		
400	1/8"-28	20,0	20,0	8,6	17	1350520-02	21,00
400	1/4"-19	22,5	22,5	11,8	19	1350520-04	21,00
400	3/8"-19	26,2	26,2	15,2	24	1350520-06	27,40
400	1/2"-14	31,5	31,5	19,0	27	1350520-08	34,90
400	3/4"-14	33,5	33,5	24,6	36	1350520-12	39,70
400	1"-11	43,0	43,0	30,7	41	1350520-16	47,50
200	1 1/4"-11	51,0	51,0	39,3	50	1350520-20	127,80
200	1 1/2"-11	53,0	53,0	45,2	65	1350520-24	398,00
	2"-11					1350520-32	459,00

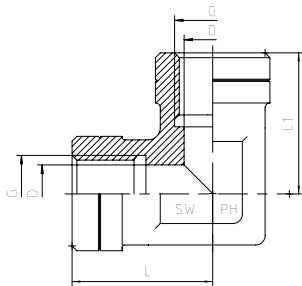


Weiblich - BSP - Zylindrisch - BSP - Zylindrisch -
BSP - Zylindrisch

Female - BSP - Parallel - BSP - Parallel -
BSP - Parallel - Fixed

Druck Pressure PN	Gewinde Thread G	Ca. Maße Approx. Dimensions				Bestellzeichen Order-Code	Brutto-Preis Gross-Price Euro (€)
		L	L1	D	SW		
400	1/8"-28	20,0	20,0	8,6	17	1450520-02	30,80
400	1/4"-19	22,5	22,5	11,8	19	1450520-04	30,80
400	3/8"-19	26,2	26,2	15,2	24	1450520-06	37,40
400	1/2"-14	31,5	31,5	19,0	27	1450520-08	51,70
400	3/4"-14	33,5	33,5	24,6	36	1450520-12	65,20
400	1"-11	43,0	43,0	30,7	41	1450520-16	75,30
200	1 1/4"-11	51,0	51,0	39,3	50	1450520-20	178,00
200	1 1/2"-11	53,0	53,0	45,2	65	1450520-24	622,00
	2"-11					1450520-32	649,00

WINKEL-ADAPTER - 90° ELBOW-ADAPTORS - 90°



Weiblich - NPT - NPT

Female - NPT - NPT

Druck Pressure PN	Gewinde Thread G = NPT	Ca. Maße Approx. Dimensions				Bestellzeichen Order-Code	Brutto-Preis Gross-Price Euro (€)
		L	L1	D	SW		
420	1/8"-27	20,0	20,0	8,6	17	1350521-02	27,30
420	1/4"-18	22,5	22,5	11,8	19	1350521-04	27,30
420	3/8"-18	26,2	26,2	15,2	24	1350521-06	35,60
420	1/2"-14	31,5	31,5	19,0	27	1350521-08	45,40
420	3/4"-14	33,5	33,5	24,6	36	1350521-12	51,60
420	1"-11,5	43,0	43,0	30,7	41	1350521-16	61,75
315	1 1/4"-11,5	51,0	51,0	39,3	50	1350521-20	166,15
315	1 1/2"-11,5	53,0	53,0	45,2	65	1350521-24	517,40

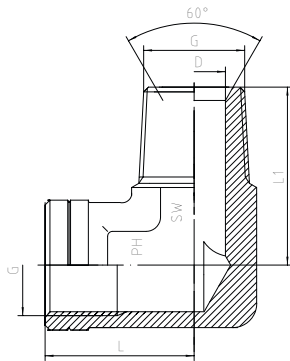


Weiblich - NPT - NPT - NPT

Female - NPT - NPT - NPT

Druck Pressure PN	Gewinde Thread G = NPT	Ca. Maße Approx. Dimensions				Bestellzeichen Order-Code	Brutto-Preis Gross-Price Euro (€)
		L	L1	D	SW		
420	1/8"-27	20,0	20,0	8,6	17	1450521-02	39,00
420	1/4"-18	22,5	22,5	11,8	19	1450521-04	39,00
420	3/8"-18	26,2	26,2	15,2	24	1450521-06	48,60
420	1/2"-14	31,5	31,5	19,0	27	1450521-08	67,20
420	3/4"-14	33,5	33,5	24,6	36	1450521-12	84,76
420	1"-11,5	43,0	43,0	30,7	41	1450521-16	97,80
315	1 1/4"-11,5	51,0	51,0	39,3	50	1450521-20	231,40
315	1 1/2"-11,5	53,0	53,0	45,2	65	1450521-24	808,60

WINKEL-ADAPTER - 90° ELBOW-ADAPTORS - 90°



Männlich - NPT mit 60°-Konus - Weiblich - NPT

Male - NPT with 60°-Cone - Female - NPT

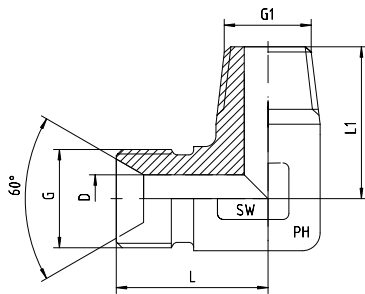
Druck Pressure PN	Gewinde Thread G = NPT	Ca. Maße Approx. Dimensions				Bestellzeichen Order-Code	Brutto-Preis Gross-Price Euro (€)
		L	L1	D	SW		
420	1/8"-27	20,0	22,0	5,0	17	1350512-02	26,90
420	1/4"-18	22,5	30,0	7,0	19	1350512-04	26,90
420	3/8"-18	26,3	32,0	10,0	24	1350512-06	35,20
420	1/2"-14	31,0	37,0	14,0	27	1350512-08	42,00
420	3/4"-14	33,5	43,0	18,0	36	1350512-12	49,00
420	1"-11,5	43,0	50,0	24,0	41	1350512-16	61,20
315	1 1/4"-11,5	51,0	56,0	30,0	50	1350512-20	165,70
315	1 1/2"-11,5	53,0	67,0	36,0	65	1350512-24	517,00



BSP - BSP
Schottausführung mit Kontermutter und 60°-Konus

BSP - Male - BSP - Male
Both sides with 60°-Cone and Back Nut

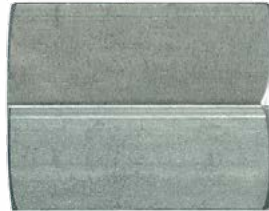
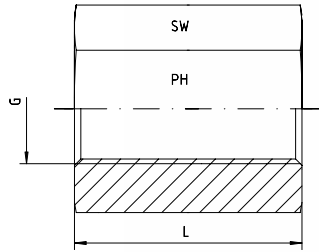
Druck Pressure PN	Gewinde Thread G	Ca. Maße Approx. Dimensions						Bestellzeichen Order-Code	Brutto-Preis Gross-Price Euro (€)
		L	L1	L2	D	SW1	SW2		
400	1/8"-28	42,5	8	28	4,5	14	14	1050511-02	14,95
400	1/4"-19	46,0	11	28	6,0	19	19	1050511-04	12,85
400	3/8"-19	52,0	12	32	8,0	22	22	1050511-06	14,55
400	1/2"-14	59,0	14	35	11,0	27	27	1050511-08	17,20
400	5/8"-14	63,0	16	35	14,5	30	30	1050511-10	27,75
400	3/4"-14	66,0	16	38	16,5	32	32	1050511-12	27,75
400	1"-11	72,0	19	41	22,5	41	41	1050511-16	39,90
200	1 1/4"-11	78,0	20	44	30,5	50	50	1050511-20	67,35
200	1 1/2"-11	84,0	22	48	37,0	55	55	1050511-24	81,00
100	2"-11	91,0	23	48	46,0	70	70	1050511-32	150,25



BSP - Zylindrisch - Männlich mit 60°-Konus
BSP - Kegelig - Männlich

BSP - Male with 60°-Cone
BSP - Taper - Male

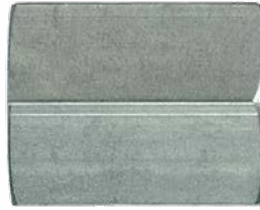
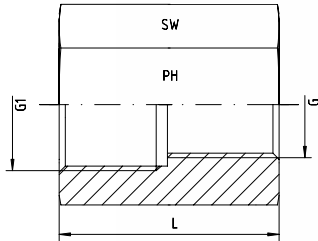
Druck Pressure PN	Gewinde Thread		Ca. Maße Approx. Dimensions				Bestellzeichen Order-Code	Brutto-Preis Gross-Price Euro (€)
	G = BSP zyl.	G1 = keg.	L	L1	D	SW		
400	1/8"-28	1/8"-28	20,0	20,0	4,0	12	1350500-02	10,00
400	1/4"-19	1/4"-19	24,5	26,0	6,0	14	1350500-04	12,25
400	3/8"-19	3/8"-19	25,5	25,5	8,0	17	1350500-06	16,25
400	1/2"-14	1/2"-14	29,5	35,0	11,0	19	1350500-08	23,75
400	3/4"-14	3/4"-14	37,0	37,0	16,0	27	1350500-12	40,10
400	1"-11	1"-11	43,0	43,0	22,0	36	1350500-16	46,75
200	1 1/4"-11	1 1/4"-11	51,0	51,0	28,5	41	1350500-20	89,00
200	1 1/2"-11	1 1/2"-11	59,0	63,0	33,5	50	1350500-24	165,00
100	2"-11	2"-11	77,5	77,5	45,0	65	1350500-32	429,00



Für Hochdruck
 Gewinde: BSP - Zylindrisch

For High Pressure
 Thread: BSP - Parallel

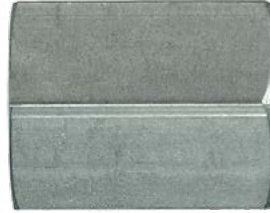
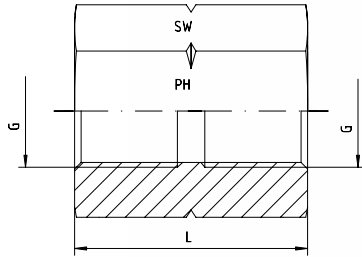
Druck Pressure PN	Gewinde Thread G	Ca. Maße Approx. Dimensions		Bestellzeichen Order-Code	Brutto-Preis Gross-Price Euro (€)
		L	SW		
630	1/8"-28	18	14	1050512-02-02	5,65
630	1/4"-19	25	17	1050512-04-04	5,65
630	3/8"-19	26	22	1050512-06-06	8,10
400	1/2"-14	34	27	1050512-08-08	10,45
400	3/4"-14	36	32	1050512-12-12	14,00
400	1"-11	43	41	1050512-16-16	22,50
315	1 1/4"-11	48	50	1050512-20-20	32,45
315	1 1/2"-11	48	55	1050512-24-24	38,25
250	2"-11	56	70	1050512-32-32	69,90



Für Hochdruck
Gewinde: BSP - Zylindrisch - Reduziert

For High Pressure
Thread: BSP - Parallel - Reduced

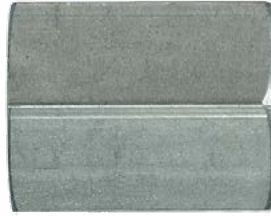
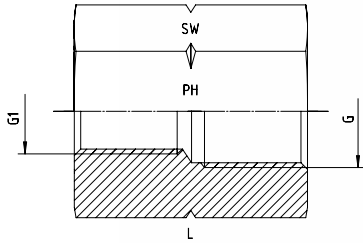
Druck Pressure PN	Gewinde Thread G1 x G	Ca. Maße Approx. Dimensions		Bestellzeichen Order-Code	Brutto-Preis Gross-Price Euro (€)
		L	SW		
630	1/4" x 1/8"	25	17	1050512-04-02	7,25
630	3/8" x 1/4"	32	22	1050512-06-04	9,95
400	1/2" x 3/8"	35	27	1050512-08-06	13,00
400	1/2" x 1/4"	35	27	1050512-08-04	14,50
400	3/4" x 1/2"	38	32	1050512-12-08	17,20
400	3/4" x 3/8"	38	32	1050512-12-06	18,90
400	1" x 3/4"	42	41	1050512-16-12	24,50
400	1" x 1/2"	42	41	1050512-16-08	25,50
315	1 1/4" x 1"	48	50	1050512-20-16	36,50
315	1 1/2" x 1 1/4"	48	55	1050512-24-20	41,80
250	2" x 1 1/2"	56	70	1050512-32-24	79,75



Für Hochdruck
NPT-Innengewinde

For High Pressure
NPT-Internal Thread

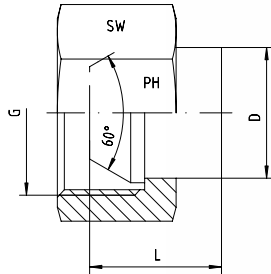
Druck Pressure PN	Gewinde Thread G = NPT	Ca. Maße Approx. Dimensions		Bestellzeichen Order-Code	Brutto-Preis Gross-Price Euro (€)
		L	SW		
630	1/8"-27	18	14	1050516-02	9,20
630	1/4"-18	25	17	1050516-04	9,90
630	3/8"-18	26	22	1050516-06	10,60
630	1/2"-14	34	27	1050516-08	13,90
400	3/4"-14	36	32	1050516-12	16,90
400	1"-11,5	43	41	1050516-16	24,90
400	1 1/4"-11,5	59	50	1050516-20	45,90
400	1 1/2"-11,5	59	55	1050516-24	75,90
315	2"-11,5	59	70	1050516-32	138,00



Für Hochdruck
NPT-Innengewinde - Reduziert

For High Pressure
NPT-Internal Thread - Reduced

Druck Pressure PN	Gewinde Thread		Ca. Maße Approx. Dimensions		Bestellzeichen Order-Code	Brutto-Preis Gross-Price Euro (€)
	G = NPT	G1 = NPT	L	SW		
400	3/4"-14	1/2"-14	36,0	32	1050516-12-08	49,00



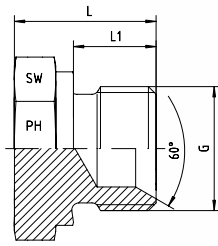
Für BSP-Gewinde mit 60°-Innenkonus
Verschluss - DKR

For BSP-Thread with 60°-Cone

Druck Pressure PN	Gewinde Thread G = BSP	Ca. Maße Approx. Dimensions			Bestellzeichen Order-Code	Brutto-Preis Gross-Price Euro (€)
		L	D	SW		
400	1/8"-28	11	12,0	14	1050513-02	7,00
400	1/4"-19	15	9,0	17	1050513-04	6,15
400	3/8"-19	15	12,4	19	1050513-06	7,00
400	1/2"-14	17	16,4	27	1050513-08	8,35
400	5/8"-14	16	22,0	27	1050513-10	14,50
400	3/4"-14	19	21,3	32	1050513-12	13,00
400	1"-11	20	27,8	41	1050513-16	20,20
200	1 1/4"-11	22	36,0	50	1050513-20	32,35
200	1 1/2"-11	25	45,0	55	1050513-24	52,55
100	2"-11	31	54,5	70	1050513-32	88,70

VERSCHLUSSSTOPFEN - BSP

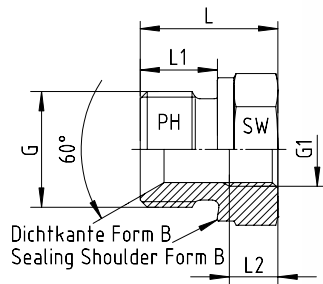
BSP-60°-CONED PLUG



Mit Außen-Sechskant
60°-Innenkonus und angedrehter Dichtkante Form B

With Hexagon
60°-Cone and Sealing Shoulder Form B

Druck Pressure PN	Gewinde Thread G = BSP	Ca. Maße Approx. Dimensions			Bestellzeichen Order-Code	Brutto-Preis Gross-Price Euro (€)
		L	L1	SW		
400	1/8"-28	14,0	8	14	1050514-02	4,05
400	1/4"-19	17,0	10	19	1050514-04	4,05
400	3/8"-19	20,5	12	22	1050514-06	5,15
400	1/2"-14	24,0	14	27	1050514-08	6,50
400	5/8"-14	24,0	14	30	1050514-10	15,50
400	3/4"-14	27,0	16	32	1050514-12	8,50
400	1"-11	31,0	18	41	1050514-16	12,70
200	1 1/4"-11	33,0	20	50	1050514-20	23,30
200	1 1/2"-11	36,0	22	55	1050514-24	35,30
100	2"-11	36,0	22	70	1050514-32	43,00



Form A

Mit 60°-Konus am Außengewinde

Beide Gewinde: Whitworth-Rohrgewinde - Zylindrisch -
DIN / ISO 228
Abdichtung durch Dichtkante Form B

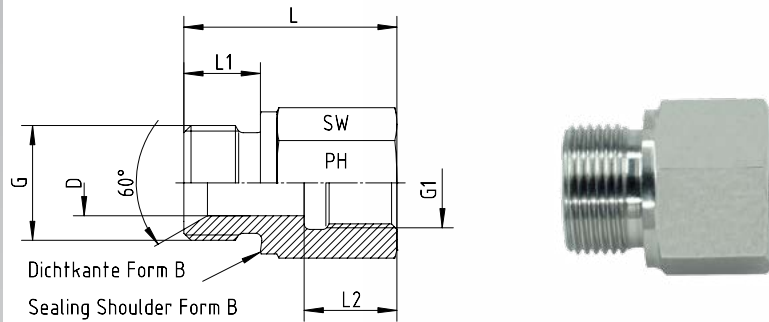
With 60°-Cone at Male Thread

Both Threads BSP - Parallel - DIN / ISO 228
Sealing by Sealing Shoulder Form B

Druck Pressure PN	Gewinde Thread		Ca. Maße Approx. Dimensions				Form Form	Bestellzeichen Order-Code	Brutto-Preis Gross-Price Euro (€)
	G = BSP	G1 = BSP	L	L1	L2	SW			
400	3/8"-19	1/8"-28	22,5	12,0	8,0	22	A	1050515-06-02	12,58
400	1/2"-14	1/8"-28	24,0	14,0	8,0	27	A	1050515-08-02	13,93
400	1/2"-14	1/4"-19	24,0	14,0	12,0	27	A	1050515-08-04	13,70
400	3/4"-14	1/8"-28	26,0	16,0	8,0	32	A	1050515-12-02	21,95
400	3/4"-14	1/4"-19	26,0	16,0	12,0	32	A	1050515-12-04	20,96
400	3/4"-14	3/8"-19	26,0	16,0	13,0	32	A	1050515-12-06	20,96
400	1"-11	1/4"-19	29,0	18,0	12,0	41	A	1050515-16-04	25,85
400	1"-11	3/8"-19	29,0	18,0	12,0	41	A	1050515-16-06	26,28
400	1"-11	1/2"-14	29,0	18,0	14,0	41	A	1050515-16-08	28,12
250	1 1/4"-11	3/8"-19	32,0	20,0	17,0	50	A	1050515-20-06	52,80
250	1 1/4"-11	1/2"-14	32,0	20,0	14,0	50	A	1050515-20-08	51,64
250	1 1/4"-11	3/4"-14	32,0	20,0	16,0	50	A	1050515-20-12	52,41
250	1 1/2"-11	1/2"-14	36,0	22,0	14,0	55	A	1050515-24-08	57,27
250	1 1/2"-11	3/4"-14	36,0	22,0	16,0	55	A	1050515-24-12	58,29
250	1 1/2"-11	1"-11	36,0	22,0	18,0	55	A	1050515-24-16	60,33
250	2"-11	1/2"-14	41,5	22,5	16,0	70	A	1050515-32-08	130,38
250	2"-11	3/4"-14	42,0	22,5	16,0	70	A	1050515-32-12	130,38
250	2"-11	1"-11	42,0	22,5	18,5	70	A	1050515-32-16	125,27
250	2"-11	1 1/4"-11	42,0	22,5	18,5	70	A	1050515-32-20	125,27
250	2"-11	1 1/2"-11	42,0	22,5	18,5	70	A	1050515-32-24	125,27

SECHSKANT-ADAPTER MIT 60°-KONUS

HEXAGON ADAPTORS WITH 60°-CONE



Form B

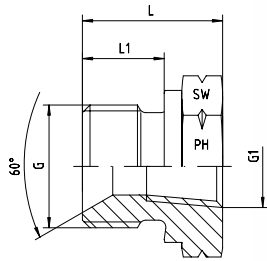
Mit 60°-Konus am Außengewinde

Beide Gewinde: Whitworth-Rohrgewinde - Zylindrisch - DIN / ISO 228
Abdichtung durch Dichtkante Form B

With 60°-Cone at Male Thread

Both Threads BSP - Parallel - DIN / ISO 228
Sealing by Sealing Shoulder Form B

Druck Pressure PN	Gewinde Thread		Ca. Maße Approx. Dimensions					Form Form	Bestellzeichen Order-Code	Brutto-Preis Gross-Price Euro (€)
	G = BSP	G1 = BSP	L	L1	L2	D	SW			
630	1/8"-28	1/8"-28	23,5	8,0	11,0	4,5	17	B	1050515-02-02	11,85
630	1/8"-28	1/4"-19	31,0	8,0	17,0	4,0	19	B	1050515-02-04	10,84
630	1/8"-28	3/8"-19	32,0	8,0	17,0	4,0	24	B	1050515-02-06	12,78
630	1/8"-28	1/2"-14	37,0	8,0	20,0	4,0	27	B	1050515-02-08	15,88
630	1/4"-19	1/8"-28	28,0	12,0	12,0	7,0	19	B	1050515-04-02	11,15
630	1/4"-19	1/4"-19	32,0	10,0	17,0	6,0	19	B	1050515-04-04	10,85
630	1/4"-19	3/8"-19	36,0	12,0	17,0	7,0	24	B	1050515-04-06	14,57
630	1/4"-19	1/2"-14	40,0	12,0	20,0	5,0	27	B	1050515-04-08	15,88
630	1/4"-19	3/4"-14	43,0	12,0	22,0	6,0	36	B	1050515-04-12	26,69
400	3/8"-19	1/4"-19	36,0	12,0	17,0	8,0	22	B	1050515-06-04	13,81
400	3/8"-19	3/8"-19	36,0	12,0	17,0	9,0	24	B	1050515-06-06	9,20
400	3/8"-19	1/2"-14	41,0	12,0	20,0	8,0	27	B	1050515-06-08	15,85
400	3/8"-19	3/4"-14	44,0	12,0	22,0	8,0	36	B	1050515-06-12	24,29
400	3/8"-19	1"-11	46,5	12,0	24,5	8,0	41	B	1050515-06-16	31,70
400	1/2"-14	3/8"-19	36,0	14,0	17,0	12,0	27	B	1050515-08-06	16,11
400	1/2"-14	1/2"-14	39,0	14,0	20,0	12,0	27	B	1050515-08-08	11,15
400	1/2"-14	3/4"-14	46,0	14,0	22,0	12,0	36	B	1050515-08-12	23,26
400	1/2"-14	1"-11	49,0	14,0	24,5	12,0	41	B	1050515-08-16	31,70
250	1/2"-14	1 1/4"-11	53,0	14,0	26,5	12,0	55	B	1050515-08-20	98,17
400	3/4"-14	1/2"-14	41,0	16,0	20,0	16,0	32	B	1050515-12-08	26,59
400	3/4"-14	3/4"-14	45,0	16,0	22,5	18,0	32	B	1050515-12-12	16,50
400	3/4"-14	1"-11	51,0	16,0	24,5	16,0	41	B	1050515-12-16	35,74
250	3/4"-14	1 1/4"-11	55,0	16,0	26,5	16,0	55	B	1050515-12-20	97,15
250	3/4"-14	1 1/2"-11	57,0	16,0	28,5	16,0	60	B	1050515-12-24	120,67
400	1"-11	3/4"-14	47,0	18,0	22,0	20,0	41	B	1050515-16-12	33,23
400	1"-11	1"-11	49,5	18,0	24,5	22,0	41	B	1050515-16-16	24,35
250	1"-11	1 1/4"-11	57,0	18,0	26,5	20,0	55	B	1050515-16-20	95,51
250	1"-11	1 1/2"-11	59,0	18,0	28,5	20,0	60	B	1050515-16-24	117,60
250	1 1/4"-11	1"-11	52,0	20,0	24,5	25,0	50	B	1050515-20-16	60,84
250	1 1/4"-11	1 1/4"-11	58,0	20,0	27,0	25,0	50	B	1050515-20-20	47,90
250	1 1/4"-11	1 1/2"-11	60,0	20,0	28,5	25,0	60	B	1050515-20-24	116,83
250	1 1/2"-11	1 1/4"-11	58,0	22,0	26,5	32,0	55	B	1050515-24-20	91,37
250	1 1/2"-11	1 1/2"-11	58,0	22,0	27,5	37,0	55	B	1050515-24-24	61,50
100	2"-11	2"-11	64,5	23,0	30,5	43,0	70	B	1050515-32-32	90,00

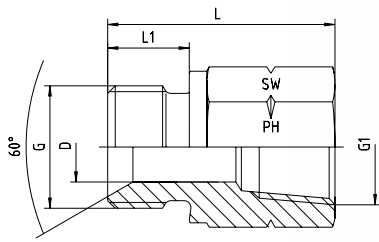


Form A

BSP-Außengewinde mit 60°-Konus
NPT-Innengewinde

BSP - Male with 60°-Cone
NPT - Female

Druck Pressure PN	Gewinde Thread		Ca. Maße Approx. Dimensions				Form Form	Bestellzeichen Order-Code	Brutto-Preis Gross-Price Euro (€)
	G = BSP	G1 = NPT	L	L1	D	SW			
400	1/2"-14	1/4"-18	24,0	14	11,5	27	A	1050518-08-04	12,05
400	1/2"-14	3/8"-18	32,5	14	12,0	27	A	1050518-08-06	12,70
400	3/4"-14	3/8"-18	30,0	16	14,5	32	A	1050518-12-06	22,10
400	1"-11	1/2"-14	31,0	18	18,0	41	A	1050518-16-08	23,60
400	1"-11	3/4"-14	32,0	18	23,0	41	A	1050518-16-12	23,60
200	1 1/4"-11	3/4"-14	37,0	20	22,5	50	A	1050518-20-12	39,95
200	1 1/4"-11	1"-11,5	37,0	20	33,0	50	A	1050518-20-16	39,95
200	1 1/2"-11	1"-11,5	39,0	22	28,5	55	A	1050518-24-16	53,95
200	1 1/2"-11	1 1/4"-11,5	39,0	22	37,0	55	A	1050518-24-20	53,95

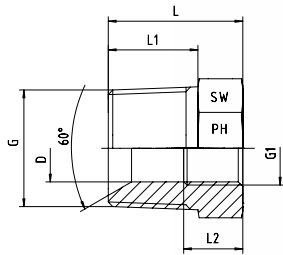


Form B

BSP-Außengewinde mit 60°-Konus
NPT-Innengewinde

*BSP - Male with 60°-Cone
NPT - Female*

Druck Pressure PN	Gewinde Thread		Ca. Maße Approx. Dimensions				Form Form	Bestellzeichen Order-Code	Brutto-Preis Gross-Price Euro (€)
	G = BSP	G1 = NPT	L	L1	D	SW			
400	1/8"-28	1/8"-27	25,0	8	4,0	14	B	1050518-02-02	9,80
400	1/8"-28	1/4"-18	31,0	8	4,0	19	B	1050518-02-04	9,80
400	1/4"-19	1/8"-27	32,0	12	6,0	19	B	1050518-04-02	9,80
400	1/4"-19	1/4"-18	32,0	12	6,0	19	B	1050518-04-04	9,80
400	1/4"-19	3/8"-18	31,0	10	7,0	24	B	1050518-04-06	9,80
400	1/4"-19	1/2"-14	38,0	10	7,0	27	B	1050518-04-08	13,15
400	3/8"-19	1/4"-18	36,0	12	9,0	22	B	1050518-06-04	9,85
400	3/8"-19	3/8"-18	36,0	12	9,0	24	B	1050518-06-06	12,05
400	3/8"-19	1/2"-14	37,0	12	9,0	27	B	1050518-06-08	12,30
400	1/2"-14	1/2"-14	39,0	14	12,0	27	B	1050518-08-08	12,70
400	1/2"-14	3/4"-14	46,0	14	13,0	36	B	1050518-08-12	22,10
400	3/4"-14	1/2"-14	44,0	16	18,0	32	A	1050518-12-08	22,10
400	3/4"-14	3/4"-14	48,0	16	18,0	36	B	1050518-12-12	22,50
400	3/4"-14	1"-11,5	51,0	16	18,0	41	B	1050518-12-16	27,20
400	1"-11	1"-11,5	49,5	18	22,0	41	B	1050518-16-16	27,20
400	1"-11	1 1/4"-11,5	50,5	18	22,0	50	B	1050518-16-20	58,80
200	1 1/4"-11	1 1/4"-11,5	58,0	20	25,0	50	B	1050518-20-20	50,90
200	1 1/2"-11	1 1/2"-11,5	62,0	22	37,0	55	B	1050518-24-24	59,90
100	2"-11	2"-11,5	64,0	23	43,0	70	B	1050518-32-32	109,00

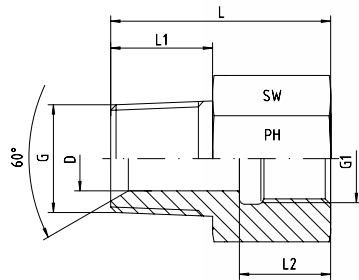


Form A

NPT-Außengewinde mit 60°-Konus
 BSP-Innengewinde

NPT - Male with 60°-Cone
BSP - Female

Druck Pressure PN	Gewinde Thread		Ca. Maße Approx. Dimensions					Form Form	Bestellzeichen Order-Code	Brutto-Preis Gross-Price Euro (€)
	G = NPT	G1 = BSP	L	L1	L2	D	SW			
400	1/2"-14	1/8"-28	26,0	20,0	11,0	8,5	22	A	1050517-08-02	12,05
400	1/2"-14	1/4"-19	27,0	20,0	17,0	13,0	24	A	1050517-08-04	12,05
400	3/4"-14	3/8"-19	28,0	20,0	17,0	15,0	27	A	1050517-12-06	22,10
400	1"-11,5	1/2"-14	34,0	25,0	20,0	19,0	36	A	1050517-16-08	23,60
200	1 1/4"-11,5	3/4"-14	40,0	25,5	22,5	24,2	46	A	1050517-20-12	38,00
200	1 1/4"-11,5	1"-11	40,0	25,5	25,0	30,6	46	A	1050517-20-16	38,00
200	1 1/2"-11,5	1"-11	40,0	26,0	25,0	30,6	55	A	1050517-24-16	53,50

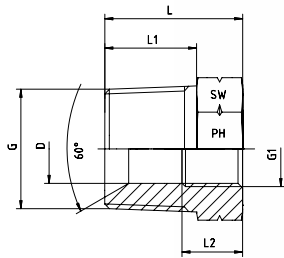


Form B

NPT-Außengewinde mit 60°-Konus
BSP-Innengewinde

NPT - Male with 60°-Cone
BSP - Female

Druck Pressure PN	Gewinde Thread		Ca. Maße Approx. Dimensions					Form Form	Bestellzeichen Order-Code	Brutto-Preis Gross-Price Euro (€)
	G = NPT	G1 = BSP	L	L1	L2	D	SW			
400	1/8"-27	1/8"-28	25,0	10,0	12,0	4,0	14	B	1050517-02-02	9,80
400	1/8"-27	1/4"-19	30,0	10,0	17,0	4,0	19	B	1050517-02-04	9,80
400	1/4"-18	1/8"-28	30,0	15,0	12,0	6,0	14	B	1050517-04-02	9,80
400	1/4"-18	1/4"-19	34,0	15,0	17,0	6,0	19	B	1050517-04-04	9,80
400	1/4"-18	3/8"-19	35,0	15,0	17,0	6,0	24	B	1050517-04-06	9,80
400	1/4"-18	1/2"-14	36,5	15,0	20,0	5,0	27	B	1050517-04-08	12,40
400	3/8"-18	1/4"-19	35,0	15,0	17,0	9,0	19	B	1050517-06-04	9,85
400	3/8"-18	3/8"-19	35,0	15,0	17,0	9,0	24	B	1050517-06-06	12,05
400	3/8"-18	1/2"-14	37,0	15,0	20,0	9,0	27	B	1050517-06-08	12,40
400	1/2"-14	3/8"-19	38,0	20,0	17,0	12,0	24	B	1050517-08-06	12,30
400	1/2"-14	1/2"-14	41,0	20,0	20,0	12,0	27	B	1050517-08-08	12,70
400	1/2"-14	3/4"-14	48,0	20,0	22,5	12,0	32	B	1050517-08-12	22,10
400	3/4"-14	1/2"-14	42,0	20,0	20,0	15,0	27	B	1050517-12-08	19,30
400	3/4"-14	3/4"-14	48,0	20,0	22,5	18,0	32	B	1050517-12-12	22,10
400	3/4"-14	1"-11	50,0	20,0	25,0	18,0	41	B	1050517-12-16	27,20
400	1"-11,5	3/4"-14	54,0	25,0	22,5	21,0	36	B	1050517-16-12	23,60
400	1"-11,5	1"-11	57,0	25,0	25,0	21,0	41	B	1050517-16-16	27,20
200	1"-11,5	1 1/4"-11	57,0	25,0	27,0	21,0	55	B	1050517-16-20	54,10
200	1 1/4"-11,5	1 1/4"-11	57,5	25,5	27,0	30,0	55	B	1050517-20-20	60,00
200	1 1/4"-11,5	1 1/2"-11	62,5	25,5	27,5	30,0	55	B	1050517-20-24	64,00
200	1 1/2"-11,5	1 1/4"-11	56,0	26,0	27,0	36,0	55	B	1050517-24-20	59,50
200	1 1/2"-11,5	1 1/2"-11	63,0	26,0	27,5	36,0	55	B	1050517-24-24	60,20
100	1 1/2"-11,5	2"-11	64,0	26,0	30,5	36,0	70	B	1050517-24-32	125,00
100	2"-11,5	2"-11	64,0	26,0	30,5	46,0	70	B	1050517-32-32	125,00

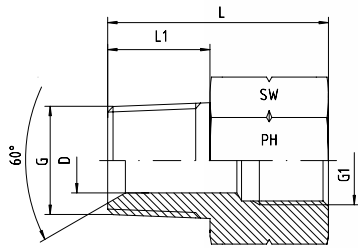


Form A

NPT-Außengewinde mit 60°-Konus
NPT-Innengewinde

NPT - Male with 60°-Cone
NPT - Female

Druck Pressure PN	Gewinde Thread		Ca. Maße Approx. Dimensions				Form Form	Bestellzeichen Order-Code	Brutto-Preis Gross-Price Euro (€)
	G = NPT	G1 = NPT	L	L1	D	SW			
630	3/8"-18	1/8"-27	23,0	15,3	8,5	19	A	1050525-06-02	12,50
630	1/2"-14	1/8"-27	27,0	20,0	8,5	24	A	1050525-08-02	15,10
630	1/2"-14	1/4"-18	27,0	20,0	11,0	24	A	1050525-08-04	15,10
630	3/4"-14	1/4"-18	28,0	20,0	11,0	27	A	1050525-12-04	27,65
630	3/4"-14	3/8"-18	28,0	20,0	14,0	27	A	1050525-12-06	27,65
400	1"-11,5	3/8"-18	34,0	25,0	14,0	36	A	1050525-16-06	29,50
400	1"-11,5	1/2"-14	34,0	25,0	17,7	36	A	1050525-16-08	29,50
400	1 1/4"-11,5	3/4"-14	39,5	25,5	23,0	46	A	1050525-20-12	47,50
400	1 1/2"-11,5	3/4"-14	40,0	26,0	22,5	50	A	1050525-24-12	49,90
400	1 1/2"-11,5	1"-11,5	40,0	26,0	28,5	50	A	1050525-24-16	49,90
315	2"-11,5	1"-11,5	40,0	26,0	28,5	65	A	1050525-32-16	75,00
315	2"-11,5	1 1/2"-11,5	40,0	26,0	43,2	65	A	1050525-32-24	98,00

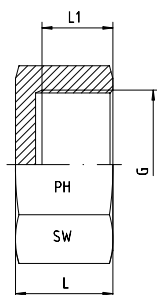


Form B

NPT-Außengewinde mit 60°-Konus
NPT-Innengewinde

NPT - Male with 60°-Cone
NPT - Female

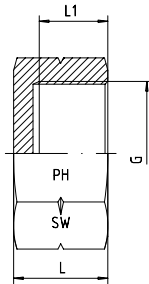
Druck Pressure PN	Gewinde Thread		Ca. Maße Approx. Dimensions				Form Form	Bestellzeichen Order-Code	Brutto-Preis Gross-Price Euro (€)
	G = NPT	G1 = NPT	L	L1	D	SW			
630	1/8"-27	1/8"-27	25,0	10,0	4,0	14	B	1050525-02-02	12,30
630	1/8"-27	1/4"-18	31,0	10,0	4,0	19	B	1050525-02-04	12,30
630	1/4"-18	1/8"-27	30,0	15,0	6,0	14	B	1050525-04-02	12,30
630	1/4"-18	1/4"-18	36,0	15,0	6,0	19	B	1050525-04-04	12,30
630	1/4"-18	3/8"-18	37,0	15,0	6,0	24	B	1050525-04-06	13,10
630	1/4"-18	1/2"-14	42,0	15,0	6,0	27	B	1050525-04-08	15,50
630	3/8"-18	1/4"-18	36,0	15,0	9,0	19	B	1050525-06-04	12,50
630	3/8"-18	3/8"-18	37,0	15,0	9,0	24	B	1050525-06-06	15,10
630	3/8"-18	1/2"-14	41,0	15,0	9,0	27	B	1050525-06-08	15,50
630	1/2"-14	3/8"-18	39,5	20,0	12,0	24	B	1050525-08-06	15,50
630	1/2"-14	1/2"-14	46,0	20,0	12,0	27	B	1050525-08-08	15,90
630	1/2"-14	3/4"-14	48,0	20,0	12,0	36	B	1050525-08-12	27,65
630	3/4"-14	1/2"-14	42,0	20,0	15,0	27	B	1050525-12-08	24,20
630	3/4"-14	3/4"-14	48,0	20,0	18,0	36	B	1050525-12-12	27,65
400	3/4"-14	1"-11,5	50,0	20,0	18,0	36	B	1050525-12-16	35,00
400	1"-11,5	3/4"-14	34,0	25,0	22,6	36	B	1050525-16-12	32,50
400	1"-11,5	1"-11,5	57,0	25,0	21,0	41	B	1050525-16-16	35,00
400	1"-11,5	1 1/4"-11,5	57,0	25,0	21,0	50	B	1050525-16-20	77,00
400	1 1/4"-11,5	1"-11,5	54,0	25,5	28,5	46	B	1050525-20-16	47,50
400	1 1/4"-11,5	1 1/4"-11,5	55,0	25,5	30,0	50	B	1050525-20-20	74,00
400	1 1/4"-11,5	1 1/2"-11,5					B	1050525-20-24	*
400	1 1/2"-11,5	1 1/4"-11,5	55,0	26,0	36,0	50	B	1050525-24-20	79,80
400	1 1/2"-11,5	1 1/2"-11,5	63,0	26,0	36,0	55	B	1050525-24-24	79,80
315	1 1/2"-11,5	2"-11,5					B	1050525-24-32	*



Mit BSP-Innengewinde

With BSP-Thread Female

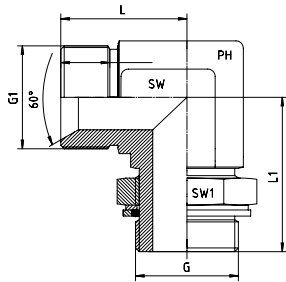
Druck Pressure PN	Gewinde Thread G = BSP	Ca. Maße Approx. Dimensions			Bestellzeichen Order-Code	Brutto-Preis Gross-Price Euro (€)
		L	L1	SW		
400	1/8"-28	15,0	10,0	14	1050519-02	8,50
400	1/4"-19	18,0	12,5	17	1050519-04	7,15
400	3/8"-19	19,0	13,0	22	1050519-06	9,20
400	1/2"-14	21,0	14,5	27	1050519-08	10,70
400	5/8"-14	21,0	17,5	30	1050519-10	12,20
400	3/4"-14	24,5	18,5	32	1050519-12	12,20
400	1"-11	25,0	19,0	41	1050519-16	17,30
200	1 1/4"-11	29,0	22,0	50	1050519-20	24,70
200	1 1/2"-11	31,0	23,5	55	1050519-24	36,60
100	2"-11	32,0	24,5	70	1050519-32	44,75



Mit NPT-Innengewinde

With NPT-Thread - Female

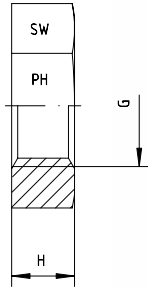
Druck Pressure PN	Gewinde Thread G = NPT	Ca. Maße Approx. Dimensions			Bestellzeichen Order-Code	Brutto-Preis Gross-Price Euro (€)
		L	L1	SW		
630	1/8"-27	15,5	10,0	14	1050520-02	10,50
630	1/4"-18	21,5	17,5	17	1050520-04	10,50
630	3/8"-18	22,0	17,5	22	1050520-06	12,50
630	1/2"-14	27,0	23,0	27	1050520-08	14,80
630	3/4"-14	27,0	23,0	32	1050520-12	16,40
400	1"-11,5	32,0	28,0	41	1050520-16	22,90
400	1 1/4"-11,5	36,0	29,0	50	1050520-20	37,50
400	1 1/2"-11,5	36,0	29,0	55	1050520-24	47,60
315	2"-11,5	36,0	29,0	70	1050520-32	74,00



Einstellbare Winkel-Verschraubungen - 90°
BSP - Männlich mit 60°-Konus
Einschraubgewinde: G: Whitworth-Rohrgewinde -
Zylindrisch
Abdichtung durch gekammerten O-Ring Viton

*Adjustable Stud Elbows - 90°
BSP - Male with 60°-Cone
Thread: BSP - Parallel
Sealing by Captive O-ring - Viton and Washer*

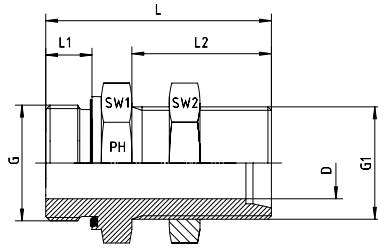
Druck Pressure PN	Gewinde Thread		Ca. Maße Approx. Dimensions				Bestellzeichen Order-Code G1 x G	Brutto-Preis Gross-Price Euro (€)
	G1 = BSP	G = BSP	L	L1	SW	SW1		
400	1/4"-19	1/4"-19	27	31,5	14	19	1350501-04-04	18,80
400	3/8"-19	3/8"-19	29	37,0	19	22	1350501-06-06	25,00
400	3/8"-19	1/2"-14	32	43,0	22	27	1350501-06-08	29,70
400	1/2"-14	3/8"-19	34	40,0	22	22	1350501-08-06	27,00
400	1/2"-14	1/2"-14	34	43,0	22	27	1350501-08-08	29,70
400	3/4"-14	3/4"-14	41	50,0	27	36	1350501-12-12	40,90
400	1"-11	1"-11	46	53,0	33	41	1350501-16-16	55,90



Für Schottverschraubungen
Innengewinde: Whitworth-Rohrgewinde - Zylindrisch

For Bulkhead Couplings
Female Thread: BSP - Parallel

Gewinde Thread G	H	SW	Bestellzeichen Order-Code	Brutto-Preis Gross-Price Euro (€)
1/8"-28	6	14	1050526-02	2,70
1/4"-19	6	19	1050526-04	2,77
3/8"-19	6	22	1050526-06	3,75
1/2"-14	6	27	1050526-08	4,10
5/8"-14	7	30	1050526-10	*
3/4"-14	7	32	1050526-12	6,30
1"-11	11	41	1050526-16	8,00
1 1/4"-11	11	50	1050526-20	12,60
1 1/2"-11	9	55	1050526-24	14,30
2"-11	9	70	1050526-32	30,50



BSP - Metrisch
Schott-Stutzen mit 24°-Konus für Schneidringverschraubung
DIN 2353 / DIN EN ISO 8434-1
mit Kontermutter
Einschraubgewinde: Whitworth-Rohrgewinde - Zylindrisch
Abdichtung durch Profildichtung - Viton

BSP - Metric
Straight Bulkhead connection for Compression Couplings
DIN 2353 / DIN EN ISO 8434-1 with 24°-Cone and backnut
Male-Stud Thread: BSP - Parallel
Sealing by an Elastomer Profiled Ring - Viton

Druck Pressure PN	Rohr A.D. Tube O.D.	Gewinde Thread		Ca. Maße Approx. Dimensions						Bestellzeichen Order-Code	Brutto-Preis Gross-Price Euro (€)
		G = BSP	G1 = Metric	L	L1	L2	D	SW1	SW2		
500	6	1/4"-19	M 12 x 1,5	53,0	12	34	4	19	17	1050509-04-06-L	45,50
500	8	1/4"-19	M 14 x 1,5	53,0	12	34	6	19	19	1050509-04-08-L	45,80
500	10	1/4"-19	M 16 x 1,5	57,0	12	35	7	19	22	1050509-04-10-L	46,50
500	8	3/8"-19	M 14 x 1,5	56,0	12	34	6	22	19	1050509-06-08-L	47,90
500	10	3/8"-19	M 16 x 1,5	55,5	12	35	8	22	22	1050509-06-10-L	48,30
400	12	3/8"-19	M 18 x 1,5	56,5	12	36	10	24	24	1050509-06-12-L	53,60
630	12	3/8"-19	M 20 x 1,5	62,0	12	38	8	27	27	1050509-06-12-S	48,50
400	15	3/8"-19	M 22 x 1,5	58,0	12	38	10	27	30	1050509-06-15-L	57,80
500	10	1/2"-14	M 16 x 1,5	58,0	14	35	8	27	22	1050509-08-10-L	54,90
400	12	1/2"-14	M 18 x 1,5	60,0	14	36	10	27	24	1050509-08-12-L	55,20
630	12	1/2"-14	M 20 x 1,5	63,0	14	38	8	27	27	1050509-08-12-S	56,90
400	15	1/2"-14	M 22 x 1,5	62,0	14	38	12	27	30	1050509-08-15-L	57,80
630	16	1/2"-14	M 24 x 1,5	64,0	14	39	12	27	32	1050509-08-16-S	58,20
400	18	1/2"-14	M 26 x 1,5	63,0	14	40	15	32	36	1050509-08-18-L	59,80
400	15	3/4"-14	M 22 x 1,5	64,0	16	38	12	32	30	1050509-12-15-L	65,50
630	16	3/4"-14	M 24 x 1,5	69,0	16	40	12	32	32	1050509-12-16-S	65,50
400	18	3/4"-14	M 26 x 1,5	66,0	16	40	15	32	36	1050509-12-18-L	65,50
250	22	3/4"-14	M 30 x 2	68,0	16	42	18	36	41	1050509-12-22-L	75,50
400	18	1"-11	M 26 x 1,5	69,0	18	40	15	41	36	1050509-16-18-L	84,30
420	20	1"-11	M 30 x 2	73,0	18	44	16	41	41	1050509-16-20-S	84,30
250	22	1"-11	M 30 x 2	73,0	18	42	19	41	41	1050509-16-22-L	84,30
420	25	1"-11	M 36 x 2	81,5	18	47	19	46	46	1050509-16-25-S	88,90
250	28	1"-11	M 36 x 2	72,0	18	43	24	41	46	1050509-16-28-L	88,00
420	30	1 1/4"-11	M 42 x 2	88,0	20	51	25	50	50	1050509-20-30-S	245,00
250	42	1 1/2"-11	M 52 x 2	86,0	22	47	36	60	65	1050509-24-42-L	259,00

